

## TRAILS HEAD HISTORY PART #6 - 2006 THROUGH 2010

### 2006

#### EXECUTIVE COMMITTEE MEETING

On **Tuesday, January 3 at 7:00 p.m.** Trails Head Executive Officers met at **Budde's** house. Present were **Vice President Pat Marshall, Secretary Eva Allen, Treasurer Jim Budde, Ross Marshall, Dick Nelson and Arnold Cole.**

With the absence of **President Pat Traffas, Vice President Pat Marshall** called the meeting to order. The minutes of the **November 10** meeting were approved.

**Treasurer Jim** reported net assets of \$5327.25, which included \$2367.00 left in the KC150 Grant. We agreed it would be good to continue the classroom project initiated by **Judy Budde** last year, which includes furnishing about \$500 worth of study materials for a unit on the Oregon Trail that would be held in four schools. We decided we needed more specifics from **Judy** on it.

The rest of the meeting involved ideas for meetings, events and activities for 2006 including:

--A chapter meeting at Shawnee Indian Mission with **Administrator Alisha Cole** to speak

--Bus tour on **April 1**, on the Border War and missionaries.

--An Executive Committee meeting at **Marshall's** house **April 20**

--Partnership for the National Trails System Workshop here on **May 5-7**

--Maybe a National Trails Day event on **June 10** with the other trails groups.

--OCTA Convention in St. Joseph **August 9-12**

--Perhaps a breakfast meeting on **September 16 or 23** at Holiday Inn with **Dan Sturdevant** speaking on the Lewis and Clark successful return to St. Louis in 1806

--Our annual meeting on **November 9** with **Craig Crease** speaking about Zebulon Pike, etc.

**Ross** suggested we nominate **Fred Six** for a Friend of the Trail Award at the convention this year. Everyone agreed.

#### CHAPTER MEETING

Trails Head Chapter gathered in the East Building at the Shawnee Indian Mission on **Tuesday night, February 21 at 7:00 p.m.** for a combined business and program meeting, hosted by **Alisha Cole**, Site Administrator for the Mission.

Attending were **President Pat Traffas, Vice President Pat Marshall, Treasurer Jim Budde, Shirley Coupal** and her sister **Jean, Ross Marshall, John Atkinson, Arnold Cole, Craig Crease, Jeanne McGuire and Barbara Magerl.** With the absence of **Secretary Eva Allen, Pat Marshall** took notes.

**Treasurer Jim Budde** stated that the \$500 partner share had been sent for the Gardner Junction Interpretive Project, leaving \$5327 in our bank account. He also said 42 dues renewals have been received for 2006. About 25 to go before the deadline on December 31.

**President Pat Traffas** said that a calling tree is being established that may help to increase attendance at Trail Head's events. She also said that information regarding the April 20 planning meeting is being sent to all local trails groups.

**Ross Marshall** mentioned the upcoming **April 1** bus tour and the **May 5-7** PNTS National Historic Trails Workshop at the Quarterage in Westport.

**John Atkinson** shared an update about the Gardner Project, which still needs some money and may not finish until next year. He also presented a power point presentation about the annual OCTA Convention in August in St. Joseph.

**Ross Marshall** then introduced **Alisha Cole**, who shared information about the renovations and new exhibit installations that will hopefully be finished in 2006 at the Mission.

**Alisha** then showed on a wide-screen TV the excellent new video that has just been produced, covering the history of the Mission. Trails Head members **Barbara Magerl** and **Dick Nelson** appeared on-screen commenting on the history of this very important historic site.

**Alisha** is an experienced administrator and has brought good leadership to the Mission in her first year. An enjoyable evening for all of us. The meeting ended at **8:30 p.m.**

### **TRAILS HEAD TREK XXXIV – April 1, 2006 – KS Terr. - Border War #3 and Missions**

A beautiful day, a full bus, and good leaders with **John Mark Lambertson**, **Craig Crease** and **Ross Marshall**. A perfect formula for a good bus tour! And that is just what we had for our third bus tour concerning the Border War (1854-56) with also an emphasis this time on Kansas Territory history, missions and missionaries. We left JoCo Community College at **8:30 a.m.**



**John Mark Lambertson, standing within the confines of the 20'x40' church at the Ottawa Baptist Mission.**



**Home of John Tecumseh (Ottaway or Tauy) Jones**

Trails Head member **John Mark Lambertson**, director of the splendid National Frontier Trails Museum in Independence, was the principal guide for the day. Since he is from Ottawa in Franklin County and a former director of the county Historical Society there, he was able to show us sites and information not easily found otherwise.

One of the key sites for the day was the second Ottawa Baptist Mission, shown above, which is about two miles northeast of Ottawa.

Rev. Jotham Meeker and his wife Eleanor founded the first Baptist Mission for the Ottawa Indians in June, 1837 about two miles south near the Fort Scott/California Road crossing of the Marais des Cygnes River. The buildings mostly washed away in the dramatic 1844 flood.

They then moved to the second site pictured above. Several buildings were built including the above church. Meeker had brought the first printing press to what is now Kansas in 1834 and it was used extensively here to print worship and tribal materials in the English translation of the

Ottawa's language that Meeker had developed. He used English letters that resembled the sounds of their language.

Meeker died in 1855 and Eleanor the next year. Their gravesite is the white stone at far right in the above picture. The Mission soon was abandoned and fell into disrepair.

The several acre site is owned by the Franklin County Historical Society. **John Mark** has worked extensively at the site and is responsible for much of the research and for discovering the location of some of the buildings.

Pictured above is the large sandstone home of John Tecumseh (Ottaway or Tauy) Jones, a prominent leader with the Ottawa Indians. It was completed in 1867 on the site of his earlier cabin which was burned by pro-slavers after the Battle of Black Jack in June, 1856.

The house is still a private residence located three miles northeast of Ottawa at the Ottawa (Tauy) Creek crossing of the 'California Road'.

Jones was a Baptist minister and contributed to the founding of Ottawa University. He is buried within the confines of the Mission Church just a few feet behind **John Mark** in the above picture. We lunched at the Sirloin Stockade in Ottawa.

Other sites visited during the day were the Battle of Black Jack Park near Baldwin, Tauy Jones Baptist Church, the 1888 Old Depot Museum, the 1859 Dietrich Cabin, Ottawa University Chapel, the first and second Ottawa Mission sites, Minneola (the one-day Kansas Territorial Capital), Centropolis, the site of the St. Bernard trading post and the so-called 'dry route' of the Santa Fe Trail south from Baldwin through the north part of Franklin County.

The trekkers returned at **5:00 p.m.** to the Johnson County Community College.

## CHAPTER PLANNING MEETING

On **Thursday night, April 20**, **President Pat Traffas** convened a planning meeting at the new Trailside Center at 9901 Holmes, made up of representatives from most of the local groups that support the preservation and promotion of the National Historic Trails in our area.

This meeting was mostly an informal open forum for the exchanging of information by each of the groups regarding plans and projects that each group is planning for the future. Hopefully this exchange will result in an increased amount of partnering together on the projects that each group would like to see accomplished.

Attending were **Pat Traffas, Eva Allen, Dick Nelson, Craig Crease, Ann O'Hare, Chuck Loomis, Anne Mallinson, Arnold Cole, Jim Budde, John Mark Lambertson, Shirley Coupal, Travis Boley** and **Ross and Pat Marshall**.

Most of these people belong to many of the local organizations, so organizational identities were not prominent.

In addition to sharing ideas for future projects, **Pat** led us in a planning segment for the **June 10** Rendezvous, for members of all the trails groups, at Lone Elm Park for National Trails Day.

The attendees agreed to keep in touch informally during the year as we seek ways to partner on projects with each other, with the National Park Service and with other local historic and civic entities.



**(l-r) Travis Boley, Ross Marshall and Ann O'Hare.**

It was a fun and informative meeting. No plans were discussed about future meetings, but likely this will not be the last time that this kind of informational forum takes place.

### **HISTORIC TRAILS WORKSHOP HELD IN WESTPORT MAY 5-7**

The Quarterage Hotel in Westport was the location of the National Historic Trails Workshop on **May 5-7**. The workshop, sponsored by the Partnership for the National Trails System (PNTS), was a splendid success and may prove to be a watershed event for historic trails locally and nationally.



**Shirley Coupal and Pat Traffas**



**(l-r) Gary Werner, Executive Director of the Partnership for the National Trails System, sponsor of the Historic Trails Workshop, and Dave Welch, OCTA's National Preservation Officer**

85 people were registered for the event from all across the nation and included representatives from fourteen of the sixteen National Historic Trails. About a dozen trail leaders from the Kansas City area, mostly Trails Head members, attended including **John Mark Lambertson, Kathy Conway, John Atkinson, Dick Nelson, Ross Marshall, President Pat Traffas, Craig Crease, Shirley Coupal, Lee Kroh, Mary Conrad and Anne Mallinson.** Others from the local area

included OCTA **Association Manager Travis Boley** (who coordinated the event), **Lou Austin, Steve Rhoades, Gordon Julich, Chuck Loomis and Bob Burkhart.**

Included in the registrants were most of the key national agency partners that work with historic trails such as the National Park Service, the Bureau of Land Management, the United States Forest Service, Federal Highway Administration and U.S. Fish and Wildlife Service. Other local and regional public partners also attended.

The basic themes for the workshop included:

--How to partner with federal and local public partners to interpret, promote and protect historic trail resources.

--How to track and utilize funding sources through various federal and state agencies to complete projects, programs and activities for each of the trails.

--See on-the-ground examples of how these partnerships and funding mechanisms are working to protect and connect historic trail resources in the Kansas City area and how to replicate them in other trail areas.

--Begin to develop plans and strategies for using public and private funding and partners to protect historic trail resources.

Friday morning's session included a review by each trail group of their accomplishments and dreams for the future, facilitated by **PNTS Executive Director Gary Werner.**

Two buses on Friday afternoon carried everyone along a tour of key sites in the Kansas City area where partnerships had preserved and interpreted trail resources. The highlight of the tour was the Hickman Mills High School property just southwest of 87<sup>th</sup> and Blue Ridge Blvd. **Lou Austin** addressed our group about how he had worked with many public partners to interpret this site and have it included in a finished segment of the MetroGreen recreational trails system.

## **RENDEZVOUS #1 AT LONE ELM**

Over 40 people representing nearly 20 trails and historical organizations from the Kansas City area gathered at the new Rendezvous shelter house at Lone Elm Park south of Olathe on **Saturday, June 10, 2006.**

The basic purpose of the gathering was to trade information about what organizations are doing and planning and to explore ways in which they can partner together to do various projects for our historic trails. But also it was a delightful time just to meet one another and get acquainted.

From **10:30 to 11:00 a.m.**, several made remarks preliminary to our walking tour.

**Melissa Mundt**, Assistant to the City Administrator of Gardner, reviewed the plans for the new BNSF Intermodal Distribution Center on the east side of Highway 56 across from the Gardner Junction Park southwest of Gardner.

A partnership of about a dozen partners including the City of Gardner, KDOT, Kansas State Historical Society, Santa Fe Trail Association, MRO Chapter, Kansas City Area Historic Trails Association, OCTA, and Trails Head Chapter is currently enhancing the Gardner Junction Park with visitor amenities and interpretive exhibits, under the leadership of **John Atkinson.**

**Kevin Corbett**, Director of the Olathe Parks Department, then briefly reviewed the acquisition and development of Lone Elm Park, which included many partners like Trails Head. The Park was dedicated a year ago and the city is still working on the completion of unfinished details like bathrooms, additional interpretive signage, native grass seeding, etc.

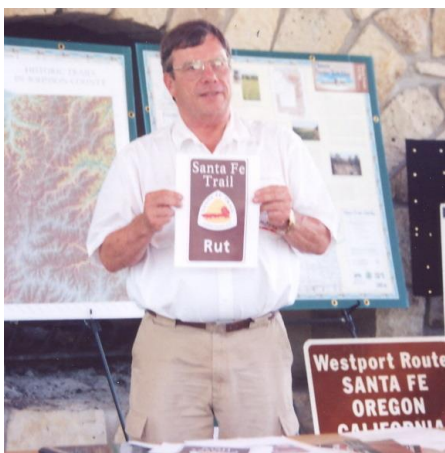
**Bert Wetherill**, President of the Kansas City Archeological Society, spoke briefly about the archeological investigations during development of the park and the various artifacts that were

retrieved. They have been displayed at times but are now in his hands for final cataloging. He also mentioned that he and **Kevin** are talking about a KCAS 2008 dig at Lone Elm Park.

At that point (11:00), **Kevin** led us on a walking tour of the park. He told the story of the thousands of emigrants that camped at this grove of trees, originally called Round Grove, which gradually became just a 'lone elm' before it also disappeared due to its use for firewood, probably in 1849. He pointed out a couple of places that have the appearance of being wagon trail swales. It was plain to all that **Kevin** feels great pride in the quality of this new park. And well he should!

The tour returned shortly before 12:00 at which time attendees enjoyed lunch by Backyard Burgers.

At 1:00, **Trails Head Chapter President Pat Traffas**, who had coordinated the preparations for the event, convened the afternoon session.



**John Conoboy**



**Steve Rhoades, landscape architect with Patti Banks, Inc.**

**Pat** introduced **John Conoboy**, (pictured above) Trails Manager in the Santa Fe office of the National Park Service, who has primary responsibility for the Santa Fe National Historic Trail. **John** reviewed the many local trail projects with which he has been recently involved and the many future needs that he sees locally, such as:

- Renewing the Certification for Rice-Tremonti House and Raytown Historical Society Museum.
- Certification of Gardner Trail Junction Park and Lone Elm Park.
- Interpretive exhibits at Sapling Grove Park in Overland Park. Many other sites like the New Salem Park in Independence on the SFT need to have interpretive exhibits.
- NPS has an initiative to get the official Santa Fe NHT, Oregon NHT and California NHT triangle logos mounted on the many hundreds of signs and sites in town. In other words, the idea is to publicize that these are National Historic Trails as designated by Congress. **John** and NPS would like help from many organizations to accomplish this objective.
- Cooperate with state DOT's to install directional and site specific auto tour route signage to replace the old isolated tour route signs that have been up for years.

**John** expressed his enthusiasm about the interest displayed today for historic trails and opportunities for groups to partner with others to accomplish what needs to be done.

**Pat** then introduced **Steve Rhoades** who has for three years been on loan to the Mid-America Regional Council (MARC) and is serving as the planning manager for the development of the MetroGreen.

MetroGreen is a 1000-mile interconnected system of public and private open spaces, greenways and hiking-biking trails that will link seven counties (Jackson, Platte, Clay, Cass Wyandotte, Johnson and Leavenworth,) in the KC metro area. It was conceived in 1990 by landscape architecture students at Kansas State University and was presented in 1991 to the American Society of Landscape Architects Convention in Kansas City. MetroGreen extends the magnificent 1894 Kessler Plan concept of parks, parkways and boulevards that exists in Kansas City, Missouri.

The MetroGreen system is a long-term project. A small percentage of the trail miles are in place already and MARC is currently identifying future route segments that will be developed.

Many of the proposed routes of the MetroGreen coincide with many segments of the Independence Route, Westport Route and Military Route of our local historic trails, and intersects with them in other locations. In other words, terrific opportunities exist to partner with MetroGreen participants on preservation, interpretive signage and public promotion of historic trails!

The just-completed markers, pathways and silhouettes at Hickman Mills High School near 87<sup>th</sup> and Blue Ridge Blvd in Kansas City are a good example of how public and private partners that support the Independence Route of the Santa Fe-Oregon-California Trail and/or the MetroGreen have partnered to interpret the historic trail and to provide the recreational opportunities of the MetroGreen. It is a prototype of what is possible for other regions.

**Steve** also was enthusiastic about the possibilities of MetroGreen and historic trails groups partnering together where sites and segments coincide and asked that these groups communicate with him on all future trail projects for possible partnering.



**Tim Talbott, Historic Site Manager with Mahaffie Stagecoach Stop and Farm with 'Buck' and 'Tip'**



**Kevin Corbett leads tour of Lone Elm Park on one of the constructed pathways.**

**Pat** then asked leaders of the various organizations to briefly share what projects and dreams they have for the future to give everyone an idea of the partnering opportunities available. Some of those mentioned were:

**Roger Slusher**, President of the Missouri River Outfitters Chapter of the Santa Fe Trail Association, shared about MRO marking the Independence Route with limestone posts. He also mentioned MRO members need to do more mapping.

**Bob Courtney**, President of the Olathe Historical Society, mentioned the new Heritage Center being developed just east of Mahaffie House, and about a hiking-biking trail on Mill Creek.

**Steve Kaub**, Vice President of the Missouri-Kansas River Bend Chapter of the Lewis and Clark Trail Heritage Foundation, shared that the chapter is planning to partner with NPS on some interpretive exhibits in the Kansas City area at the Lewis and Clark Expedition campsites.

**Craig Crease**, President of the Kansas City Area Historic Trails Association, said KCAHTA is finalizing a cooperative agreement with NPS for a number of marking, mapping and preservation efforts in the area and would welcome partners as these projects proceed.

Several others sharing plans included Mahaffie Stagecoach Stop and Farm Site Manager **Tim Talbott**, Historical Society of New Santa Fe President **Ann O'Hare**, and OCTA Association Manager **Travis Boley**.

A summary of the strategies discussed:

1. When your group is planning any signage, preservation, educational, promotional project (any kind of project), invite others to partner with you. Not only can this help the project to be a reality, but these other groups can be supportive of the project in the future from the pride and ownership they also feel in the project.
2. Endeavor to work with NPS and **John Conoboy**. He has the funding to participate with you on a matching basis on trails projects.
3. Even though you may have the money to complete your project all by yourself, DON 'T DO IT THAT WAY. Enable others to partner with you and save some of your money to partner with them on their project! Thereby you both (or all) share pride in completed projects.
4. Keep in touch with other chapter and historic group presidents.... make phone calls, share newsletters and other information that will let them know what you are planning. That will help others see opportunities to help you.
5. Remember the above examples of the Gardner Trail Junction Park project and the Hickman Mills School project. Partnering can do both big and little jobs. **PARTNERING WORKS!**
6. Remember the MetroGreen trail project and keep in touch with **Steve Rhoades** on your project ideas.

**Pat** thanked everyone for coming and adjourned the meeting at **2:25 p.m.**

## **LEWIS AND CLARK POINT**

The Lewis and Clark Point name is now official. The circle drive at 8<sup>th</sup> and Jefferson downtown, which is one of the most prominent scenic viewpoints in the Kansas City area, now has that official name.

Many of us have used that name for years because it is believed to be the exact spot that Meriwether Lewis and William Clark ascended to on September 15, 1806 as they returned from their remarkable three-year expedition.

Clark's journal for the day records (spelling preserved) "*at 11 A.M. passed the enterance of the Kansas river which was very low, about a mile below we landed and Capt Lewis and my Self assended a hill which appeared to have a Commanding Situation for a fort, the Shore is bold and rocky immediately at the foot of the hill, from the top of the hill you have a perfect Command of the river, this hill fronts the Kansas and has a view of the Missouri a Short distance above that*



*river, we landed one time only to let the men gather Pappaws or the Custard apple of which this Country abounds, and the men are very fond of."*

Clark was right; this point certainly does have a commanding view of the rivers, the downtown airport, the west bottoms, Kaw Point, etc.

Even some local maps called this point by that name, perhaps confusing it with the name of Clark's Point, which is the point of land about halfway down the slope named in the 1930s for a local civic personality. The point actually has been a part of what is called West Terrace Park. Case Park is to the south of it and extends south to 10<sup>th</sup> Street.

The circle drive was extensively modernized in 2000 as part of the installation and dedication of the magnificent sculpture of Lewis, Clark, Sacagawea, her baby Jean Baptiste Charbonneau, York and Lewis's dog Seaman. But no naming effort occurred.

The local Missouri-Kansas River Bend Chapter of the Lewis and Clark Trail Heritage Foundation initiated an effort about a year ago to have the point named Lewis and Clark Point.

Chapter president **Dan Sturdevant**, **Pete Cuppage** and **Ross Marshall** as members of the chapter board of directors, appeared several times at meetings of the Kansas City Board of Parks and Recreation Commissioners. On July 18, the name was officially adopted.

Those Lewis and Clark members are working on some new signage for the site.

## **OCTA 2006 CONVENTION IN ST. JOSEPH**

The 2006 OCTA Convention in St. Joseph, MO was hosted by Gateway Chapter **August 9-12**, headquartered at the Ramada Inn. The weather was fairly cool for August so the tours went well. **John Atkinson** and **Jackie Lewin** were the coordinators.

Aside from the excellent array of speakers and three days of bus tours, seven workshops were held which is more than normal.

Many other Trails Head members helped with the convention, including **Mary Conrad** as Speakers Chair and bus tour guide, **Kathy Conway** (lotsa things), **John Mark Lambertson** (speaker), **Judy Budde** (bookroom), **Jim Budde** (buses, etc.), **Bob Hamilton** and **Tom McCutcheon** (buses), **Dick Nelson** and **Craig Crease** (bus tour leaders) and **Ross Marshall** (convention booklet editor, workshops and bus tour leader).

Among other Trails Head members attending were **Arnold Cole**, **Eva Allen**, **Pat Traffas**, **Ruby Nelson**, **Barbara** and **Howard Magerl**, plus OCTA members **Ona Gieschen** and **Sylvia Mooney**.

One of the highlights of the convention was the appearance of Ezra Meeker (as portrayed by **Ray Egan**), with his wagon (the actual one) on the 100<sup>th</sup> anniversary of his journey back along the Oregon Trail. He marked it with monuments so that future generations would not forget its significance and would know where it went.

Ezra had gone to Washington over the Oregon Trail in 1852 with his young family and returned over the trail again in 1906 and 1910 with his wagon, in 1910 by automobile and later by airplane. Meeker is one of the legends of the Oregon Trail and his promotion of the Oregon Trail a century ago was extremely pivotal in raising the trail to a national awareness.

One of the highlights of this and every convention is the awards banquet, held this year on Wednesday night.

**Fred** and **Lilian Six** (pictured below), nominated by Trails Head Chapter, received OCTA's *Friend of the Trail Award*.

**Fred**, a retired Kansas State Appellate Court Judge, and his wife **Lilian** have for several years, owned the property on the south side of the Wakarusa River just south of Lawrence which is the

location of the Upper Wakarusa Crossing, or popularly known as the Blanton Bridge Crossing, of the Oregon-California National Historic Trail from Independence and Westport.



**Fred and Lilian Six with their *Friend of the Trail Award*.**



**Mary Conrad**

This crossing is one of at least four on the Wakarusa near Lawrence and **Fred** has done considerable research on both the location and the history of the crossing. They also have had archeologists and other historians do research at the property. Because the Wakarusa River had steep banks and was a difficult crossing, many trail diaries mention the difficulties experienced.

In October, 1854, Napoleon Bonaparte (Bony) Blanton patented this property, built a cabin and by the summer of 1855 had built a toll bridge across the Wakarusa. By this time, most, if not all, Oregon-California travelers were using routes farther north out of St. Joseph or Council Bluffs. But the Blanton Bridge Crossing continued to be used by local traffic and figured prominently in the 'Border War' period of Kansas Territory.

**Fred** and **Lilian** built their retirement home about ¼ mile east of the crossing some years ago and have warmly welcomed visits by both Trails Head and Kanza Chapter members. **Fred** is always eager to talk to visiting groups about the history of the site. The **Sixes** have been OCTA members and Trails Head good friends for several years.

Trails Head Chapter members who received awards were **Mary Conrad** (pictured above), **Tom McCutcheon** (pictured below) and **Bob Hamilton** (no picture – sorry, Bob!), all of which received national Certificates of Appreciation.

The National Frontier Trails Museum received an education award, accepted by **Richard Edwards**.

**Mary**, a long-time member of both the Gateway and Trails Head Chapters, chaired the Speakers Committee for the convention. **Mary's** reputation has always been that of one who volunteers for whatever job needs to be done and doing it well.

**Tom** moved away from Kansas City many years ago to Rock Springs, WY, but has maintained his membership in Trails Head. He has continued his trail work in Wyoming and the Wyoming Chapter, impacting many of the sites and routes of the southwest part of the state.

**Bob** is also a member of Gateway and Trails Head Chapters and has served as President of Gateway. He is a familiar face to many, helping at conventions, on the trail or with his camera.



**Tom McCutcheon**



**Jere Krakow**

Pictured above is **Jere Krakow**, a good friend of not only OCTA and the Oregon-California National Historic Trail, but also several other national historic trails in the western two-thirds of the U.S. as the National Park Service Superintendent of Long Distance Trails for the Inter-Mountain Region. He received a well-deserved special award called the “Outstanding Superintendent Award”.

**Jere Krakow** is an excellent example of a government employee who REALLY IS here to help! National Historic Trails could not have a better friend.

The convention was well-attended and enjoyed by all. The 2007 convention will be in Gering, NE hosted by the Nebraska Chapter and coordinated by **Loren Pospisil**, Director of the Chimney Rock Historic Site and Museum.

## **CHAPTER PLANNING MEETING**

A Trails Head planning meeting was held at McGilley and Hoge Funeral Home hosted by **President Pat Traffas** on **Friday evening August 18, 2006**. Present were **Pat, Vice President Pat Marshall, Secretary Eva Allen, Treasurer Jim Budde, Dick Nelson** and **Ross Marshall**. **Pat** called the meeting to order at **5:05 p.m.**

Those present discussed our chapter meeting on **Saturday, September 16**, which will be at Harvey House in Union Station at **8:30 a.m.** Attendees will be able to leave after the meeting to observe the festival being held at Kaw Point for the 200<sup>th</sup> anniversary of Lewis and Clark returning downriver.

Trails Head’s Annual Meeting will be held on **Thursday evening, November 9**. **Pat Traffas** will find a location for it. Planners will ask **Craig Crease** to speak about Zebulon Pike.

Trails Head may be able to have a MET mapping training session led by **Dave Welch** during the OCTA Mid-Year Board meeting here next **March 2-4**.

**Jim Budde** reported that we have over 70 members, but since OCTA has requested all chapter dues be paid through OCTA Headquarters at the beginning of each year, a lot of re-dating and probably delay of some dues incomes will happen.

He also mentioned the Shawnee Indian Mission wants to dedicate one of its rooms to a trail history display and the Mission has asked for Trails Head’s help. He will talk to **Barbara Magerl** to find out what needs to be done.

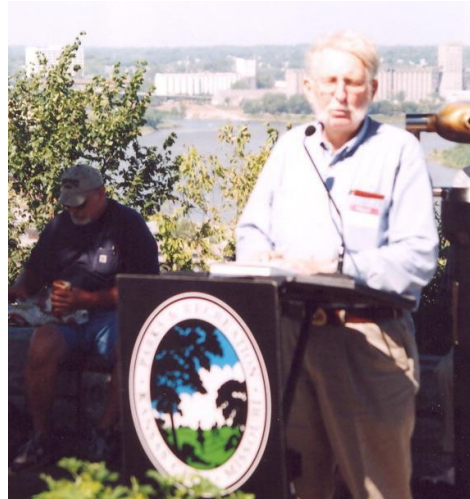
**Ross** expressed pleasure with the success of the Lone Elm Rendezvous picnic. Groups are now starting to think in terms of partnering on trail events and projects. Trails Head could consider helping KCAHTA with its marker projects. The meeting was adjourned at **6:30 p.m.**

### **LEWIS AND CLARK JOURNAL READINGS**

The local Lewis and Clark River Bend Chapter sponsored readings of the Lewis and Clark journals at the location and time of the expedition 200 years ago. On **September 14**, **Pat Traffas** and **Ross Marshall** were in Leavenworth and on the 15<sup>th</sup>, **Pete Cuppage** and **Ross Marshall** were at Lewis and Clark Point.



**Pat Traffas reads journals at Leavenworth**



**Pete Cuppage reads journals at L & C Point**

### **TRAILS HEAD BREAKFAST MEETING**

Not many attended the **8:30 a.m.** breakfast at the new Harvey House Restaurant at Union Station on **September 16**, but the food and service were very good! The Harvey House Restaurant is where the old fast food courts were at the Station.



**Pictured above (l-r) is President Pat Traffas, Secretary Eva Allen, Past President Arnold Cole, and Vice President Pat Marshall. At rear table is (l-r) Diane Hinshaw, Dick Nelson and Bob Hamilton**

The Harvey House restaurants have all closed, but this restaurant is reminiscent of an energetic entrepreneurial initiative by Frederick Harvey in the nineteenth century.

Harvey was born in England in 1835 and came to this country with his family and began to work in restaurants in New Orleans and St. Louis. With his young family, he moved to St. Joseph and began to work for railroads in sales.

After working for the Atchison, Topeka and Santa Fe Railroad, he convinced the railroad company in 1876 to support his idea for clean and attractive food along the rail line which was nearing completion to Santa Fe. He started restaurants in the railroad depots and served food in the dining cars. He had a key restaurant in Union Station, which furnished food used all along the line to Santa Fe.

He gained a reputation for excellent food, good service and especially for the 'Harvey Girls'. In the beginning he had young men as waiters and servers, but found them to be undependable especially on Sunday mornings!

But in 1883, he hired single women 18 to 30 years old, paid them \$17.50 per month including room and board and dressed them in clean starched black and white uniforms.

Harvey's health failed and he died in 1901. His sons continued the business for several decades.

Before we all left for various historical activities for the day at **9:30 a.m.**, such as the Shawnee Indian Mission Dedication, Lewis and Clark reenactment at Lewis and Clark Point and the Ethnic Festival at Kaw Point, a brief planning meeting was led by **President Pat Traffas**.

### **SHAWNEE INDIAN MISSION**

**Barbara Magerl**, co-chair of the SIM Development Committee, took part in the ceremony on **September 16** to open the new exhibits at the Mission. The crowd included legislators, educators and many history buffs. Assisting in the Trails Room, which had a temporary exhibit, were OCTA members **Judy Budde, Ona Gieschen, Kendall McNabney, Sylvia Mooney and Dick Nelson**.

Two new exhibits are yet to come, including the one dedicated to the Oregon-California and Santa Fe Trails. The permanent exhibit is a work in progress, with input from local trails experts and devotees.

Trails Head Chapter has purchased an inscribed brick which will be installed later this fall. Effort will be made to notify members when the date is set.

### **3-TRAILS CROSSING MEMORIAL HIGHWAY DEDICATION**

The so-called 'Grandview Triangle', the complex highway intersection in the southeast quarter of the metropolitan area, has recently been officially named the *3-Trails Crossing Memorial Highway* by the Missouri Department of Transportation and by a special act of the Missouri Legislature.

Ceremonies to officially unveil new signs designating the new name were held on a record hot day (about 95 degrees!) on **October 3, at 1:00 p.m.** in Marion Park within the interchange, on the bank of Hart Grove Creek. Among the speakers to the crowd of several dozen were **Kansas City 6th District Councilmen Alvin Brooks, Dr. Charles Eddy, Missouri State Senator Yvonne Wilson, Craig Crease and Ross Marshall**.

Major reconstruction of this complicated interchange of I-435, I-470 and U.S. Highway 71 is just now being completed and the new name commemorates the Independence Route of the Santa Fe, Oregon and California National Historic Trails that passes directly through it.

Many tens of thousands of mountain men, traders, freighters, missionaries, adventurers, and emigrants, including the ill-fated 1846 Donner-Reed Party, passed through this intersection on their way to seek their fortune as a part of the westward movement of this country.

Any location where the Donner-Reed Party camped is a legitimate historic site. As recorded by Hiram O. Miller, a member of the Donner-Reed Party, they camped there for two days on May 14 and 15 because of the rain. He said *“Camped at ‘Heart Grove’ Jackson County near the Indian line twenty two miles from Independence on the Big blue.”* His distance estimate is a



(l-r) is NPS Trails Manager John Conoboy, Craig Crease, UMKC History Professor Bill Worley as Jim Bridger, and Ross Marshall.

little much, but he is correct in that Hart Grove Creek empties into the Big Blue River a couple of miles north.

As you drive through this interchange you will see the new signs on the side of the roadways.

We extend great appreciation to **Lou Austin** and Trails Head member **Ann O’Hare** for spearheading the effort to accomplish this name change.

### TRAILS HEAD ANNUAL MEETING

On **Tuesday November 7**, the chapter held its Annual Meeting at the new Plaza Library. **President Pat Traffas** called the meeting to order at **7:00 p.m.**

**Treasurer Jim Budde** reported a balance of \$5666.26 as of September 30, 2006. During 2006, \$500 was sent to the Gardner Junction project and \$500 was sent to Eleanor Craig’s Accessible Arts for work with sight impaired youth, all as approved at last year’s annual meeting. The Trails Head financial condition should allow the chapter to participate in some 2007 trail projects.

Nominating Committee Chair Arnold Cole presented the slate of officer nominees for 2007 as follows:

<b>President</b>	<b>Pat Traffas</b>	(second year)
<b>Vice-President</b>	<b>Pat Marshall</b>	(second year)
<b>Secretary</b>	<b>Alisha Cole</b>	New
<b>Treasurer</b>	<b>Jim Budde</b>	(many years!)



**(l-r) President Pat Traffas, Secretary Alisha Cole, Treasurer Jim Budde and Vice President Pat Marshall**

Trails Head is pleased to have **Alisha Cole** as the new secretary. She is the Site Administrator of the Shawnee Indian Mission Historic Site and has many years of experience relating to Kansas City area historic sites and with historic community leaders. She will be a valuable addition to the Executive Committee.

As a reminder, the chapter president and vice president serve a maximum of two years, but secretary and treasurer can serve an unlimited number of years.

**Jim** reported that a project is underway to provide OCTA member **Bill Hill's** trail books to the fourth graders in the Gering, NE area during the OCTA convention in August. Trails Head Chapter could partner with other OCTA chapters and help support this work for about \$200. The motion was made and passed that the chapter do that.

**Craig Crease** presented a talk on Zebulon Pike including comments about Dr. John Robinson, who accompanied Pike. 2006-07 is the bicentennial of Zebulon Pike's Southwestern Expedition, which came through Missouri and Kansas. In many ways it was a companion to the Lewis and Clark Expedition for Northwest Exploration.

Intrigue regarding Pike's intentions, his orders from General James Wilkinson, his unsteady leadership, his relationship to Spanish leaders, and the role of Dr. John Robinson are issues that made this presentation by **Craig Crease** of great interest. Some of his comments:

--The election of 1800 (Jefferson vs Burr) was a particularly tarnished one.

--Spain felt betrayed by France for selling Louisiana to the U.S. and never recognized America's purchase as legitimate.

--The Burr-Wilkinson conspiracy for southwest domination was a serious matter that Pike probably did not know about in depth.

--Pike knew his assignment was one of spying, but he also was ambitious as an explorer and wanted to be the one to find the limits of the Louisiana Purchase, i.e. the headwaters of the Arkansas and Red Rivers.

--Pike climbed Mt. Rosa in Colorado, but never reached Blue Mountain (Pike's Peak)

--Pike's widow had a home fire in 1840 and Pike's papers were lost there.

Craig is a member of the Zebulon Pike Bicentennial Commission and has extensively researched the records and journals of the Pike Southwestern Expedition of 1806-7.

The meeting was adjourned at **8:15 p.m.**

## 2007

### **TRAILS HEAD PLANNING MEETING**

Trails Head Executive Committee had a 2007 planning meeting **Tuesday, January 2 at 5:00 p.m.** at McGilley-Hoge Funeral Chapel (“Pat’s Place”) in Overland Park. Present were **President Pat Traffas, Vice President Pat Marshall, Secretary Alisha Cole, Treasurer Jim Budde, past presidents Dick Nelson and Ross Marshall, KCAHTA President Craig Crease and Ruby Nelson.**

**Treasurer Jim Budde** reported that the current balance is \$5696.26, \$1867 of which remains from the KC150 Grant. He also reminded us that, since OCTA National dues have always been paid on the date that a member joined OCTA, now chapter dues are to be paid to Headquarters on that same date. Always before, each chapter has collected its own dues on January 1.

**Ross Marshall and Craig Crease** presented the plans for the **April 14** bus tour. The theme will be “Wild Bill” Hickok and his days in the KC area, both before and after he became famous.

The OCTA Mid-Board meeting will be held in Independence **March 2-3**. The OCTA Convention this year will be in Scottsbluff **August 8-12**.

Trails Head decided to hold a Chapter Meeting at **9:30 a.m. on Saturday June 16** at the National Frontier Trails Museum focusing on the five themes interpreted there: Santa Fe, Oregon, California and Lewis and Clark Trails, plus the early railroads.

The Annual Meeting will be **November 8** at the Shawnee Indian Mission.

**Ross Marshall** discussed all the markers that trails groups are planning, especially for the Westport Route that has very few, and said the National Park Service would probably furnish about \$5000.

He also said the plaque that was in Penn Valley Park is being stored by the KC Parks Department and will be reset when the new Federal Reserve Bank is completed. A marker is also needed at the Shawnee Indian Mission.

### **OCTA MID-YEAR BOARD MEETING**

At least every other year, the OCTA national mid-year board meeting is held in Independence, as it was this year on **March 2 and 3**.

Quite often, Trails Head Chapter participates in the hosting of the event, since Trails Head is the local chapter. This year the chapter hosted the breakfast for the board members at a cost of \$165.





Pictured above in the National Frontier Trails Museum is Trails Head member **John Atkinson** (standing) as he reports on the Gardner Junction project. Seated are (l-r) **John Mark Lambertson, Treasurer Turner Rivenbark, President Vern Gorzitze, Vice President Glenn Harrison, Secretary Bernie Rhoades** (partly hidden) and **Association Manager Travis Boley**.

### TRAILS HEAD TREK XXXV – April 14, 2007 – The life of Wild Bill Hickok here

The morning began with three inches of snow on the ground, but guide **Craig Crease** nevertheless made the day enjoyable as he led a full bus load of chapter members and guests to the various sites in the Kansas City area where the famous James Butler (Wild Bill) Hickok spent time 130 to 150 years ago. We left at **8:30 a.m.** from K-Mart at Johnson Drive and S/M Pkwy.

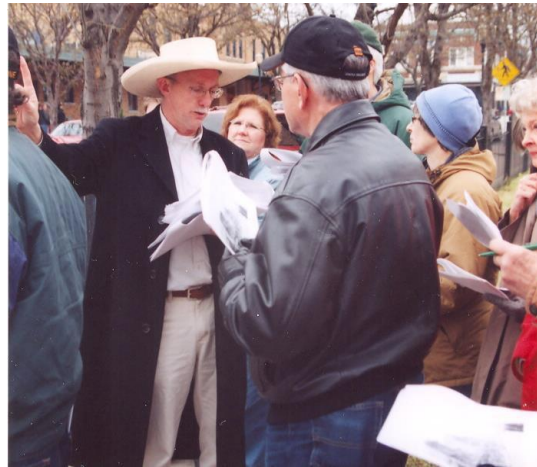
Hickok was born May 27, 1837 in Homer (now Troy Grove), Illinois and came to the new Kansas Territory in June, 1856 just as the border war was heating up.

The day began by visiting the area of 83<sup>rd</sup> to 87<sup>th</sup> and Clare to Gleason Roads where the young Hickok filed a claim on 160 acres in the spring of 1857. Hickok Park (established 1993) is at 85<sup>th</sup> and Clare today, which is in Monticello, Kansas.

Our next stop was at the Monticello Cemetery at 75<sup>th</sup> and Gleason Road where his 16-year-old girl friend Mary (Owen) Hagan is buried. He might have married her but because she was part Shawnee Indian, Hickok's family objected.



**Greg Herman**



**Craig Crease explains about two of Hickok's 1870s haunts, the Marble Saloon and St. Nicholas Hotel at 5<sup>th</sup> and Main in the River Market area.**

The next stop was at Lanesfield School at 187<sup>th</sup> and Dillie Road, near the site of the September 1, 1856 Battle of Bull Creek. There the trekkers met local historian **Greg Herman**, pictured above in the shelter house at Lanesfield School on that cold morning, as he talked about the battle.

No blood was shed in this battle, because David Atchison's 'Grand Army' fled the field believing they were outnumbered by James Lane's Free State volunteers. Hickok participated under Lane, but few details are known. He later became Lane's personal bodyguard.

A delightful lunch was enjoyed at Winslow's Barbeque at the River Market area, followed by a walking tour and **Craig's** handout of pictures highlighting sites relating to Hickok's presence

during winter months in what was early Kansas City in the 1870s, before he met his 1876 demise in Deadwood, SD at the hands of Jack McCall.

He was 'acquainted' with Annie Chambers who had a lavish home which doubled as a brothel at 3<sup>rd</sup> and Wyandotte. The office of his eye doctor, Dr. Joshua Thorne, was at 3<sup>rd</sup> and Walnut. His eyes must have been okay because he shot off the head of a nearby chicken for the doctor!

Other shooting episodes by Hickok, an excellent marksman, were reviewed by **Craig**.

Later in the afternoon, the bus went by the home of Monroe McCanles at 3343 Bellefontaine. He was the son of David McCanles, who witnessed his father being shot by Hickok in a confrontation at Rock Creek Station in southern Nebraska in 1861, which made Hickok famous.

**Craig** has been researching Hickok and his life in Kansas City for many years and his knowledge made for an informative and fun day. The bus returned at 4:45. Good tour!

### **TRAILS HEAD HISTORY DAY AWARDS**

National History Day, which occurs annually in June, is the culmination of a series of regional contests in which students have an opportunity to conduct historical research and present papers, exhibits, documentaries and performances based upon a central historical theme.

The theme for 2007 was "Triumph and Tragedy in History". Students are invited to select a historical topic related to any aspect of local, regional, national, or world history and focus their research and presentation within the limits of the overall theme. Each state in the U.S. is divided into regions and the Missouri side of the Greater Kansas City area (Missouri Region 3) History Day was held at the Truman Library on **March 10, 2007**.

Over the years numerous members of Trails Head Chapter have volunteered and participated in this endeavor and they have found this experience quite rewarding. This year "volunteer" judges included **Mary Conrad, Barbara Magerl, Kathy Conway, Ona Gieschen** and **Jim Budde**. Winning contestants are eligible to participate in the state contests and, if successful, would move on to the national finals at the University of Maryland in June.

During the last several years, Trails Head Chapter has nominated individual candidates for special awards when their projects demonstrated meritorious effort and when their project focused on the National Historical Trails.

The recipients of the 2007 awards from Trails Head Chapter are:

Jr. Group Exhibit: *The Oregon Trail: The Difficult Journey to Opportunity*, by **Stephanie Taylor** and **Kathy** and **Lindsay Koerperich** from New Mark Middle School. Teacher Advisor: **Jason Endacott**.

Sr. Group Exhibit: *Women on the Oregon Trail: Triumph Despite Tragedy* by **Malerie Moore, Claudia Krueger** and **Abby Nelson** from Blue Springs High School. Teacher Advisor: **Dacia Rzechowski**.

Trails Head Chapter presented each of these student historians with a \$25 cash award for their very commendable efforts.

### **MAPPING, MARKING, MONITORING WORKSHOP**

Trails Head, Gateway and Kanza Chapters combined to host the 'MMM' workshop that has been held at several other OCTA chapters in the past couple of years. It was held on **MAY 5-6**. Co-sponsored by OCTA and the National Park Service, the workshop was led by OCTA National Preservation Officer **Dave Welch**, assisted by OCTA Mapping Committee Chair **Jim McGill** and California-Nevada Chapter Preservation Officer **Leslie Fryman**.

On Saturday the session was held in the Kanwaka Community Center, which is on U.S. Highway 40 about five miles west of Lawrence. That classroom session reviewed the basics of OCTA trail preservation and mapping strategies.



**Pictured above (l-r) is landowner Bill Fuerst, Dave Welch, Ken Martin and Leslie Fryman. Fuerst's land is about ½ mile west and one mile north of the Kanwaka Community Center. There are three or four shallow swales that track southeast-northwest 100 feet inside of a curve on U. S. 40.**



**Pictured above (l-r) are Merlin and Barbara Wilson and Dave Welch in Martin's garage because of the rain! Wilson's land is north of I-70 about 1½ miles northwest of Big Springs. Some shallow swales are on their property near I-70.**



**Pictured above (l-r) are Dave Welch and Dana and Roy Braughman, also in their garage! Their land is adjacent to the Wilson's to the west. Several shallow swales track east-west 200 yards south of U.S. 40 near the crest of a ridge .**



**Pictured above is Lucas Pellant and Dave Welch. Lucas's father, OCTA and Trails Head Chapter member Leo Pellant, was not at home at the time. Leo was a recipient of OCTA's Friend of the Trail Award some years ago. Pellant's land is to the west and adjacent to the Braughman's land. Three magnificent swales are in their front yard.**

Mapping:

This on-the-ground phase is where teams search for any evidence of ruts or swales or other resource that still exists along the trail. The original Mapping Emigrant Trails (MET) classifications for ruts or swales are:

Class #1 - Unaltered Trail, which is basically unchanged since trail days.

Class #2 – Used Trail, which is trail ruts that have been, or are being used, by vehicles today.

Class #3 – Verified Trail, which is the known route and location of the trail, but very little evidence remains today.

Class #4 – Altered Trail, where the trail route is known, but is altered, perhaps with a modern road over the top of it.

Class #5 – Approximate Trail, where no evidence remains and only the approximate location of the actual trail is known.

#### Marking:

After the trail is located and identified, perhaps either route marking with carsonite posts or an interpretive marker in an accessible location could be done to identify the trail for the public.

#### Monitoring:

The basic process of trail preservation whereby the chapter maintains a working relationship with the landowner and keeps a watchful eye on both the trail resource and the markers to identify and mitigate any threats or needs that arise.

The Sunday session was to be on the ground looking at swales and classifying them according to the above criteria. A steady rain hampered that effort, but participants were able to visit four nearby landowners that have swales on their property. Pictured above are these landowners as they were presented with OCTA Certificate of Appreciation Awards.

A good group of members from all three chapters attended. Among those from Trails Head Chapter were **Ross Marshall, Arnold Cole, Tony Miller** and **Bob Burkhart**.

Now that this training is completed, Trails Head will be resuming its local mapping efforts. The chapter will need three or four teams who will focus on specific segments of Metro trail system. Anyone interested can join chapter members and the teams will be going out in late August, weather permitting.

### **AARON MAHR NEW NPS SUPERINTENDENT**

Earlier this spring, the news was received that **Aaron Mahr** has been named General Superintendent of the National Park Service Intermountain Region's National Trails System Program replacing our old friend **Jere Krakow**, who retired.

**Aaron** has been with NPS since 1990 and for the last seven years has served as National Trails System Historian in the Santa Fe NPS office and has been to the Kansas City area many times. His responsibilities will include the management of the Santa Fe office as well as the Salt Lake City office.

The Intermountain Region has administrative responsibility for nine National Historic Trails, including Santa Fe, Oregon, California, Pony Express, Mormon Pioneer, Trail of Tears, Old Spanish, El Camino Real de Tierra Adentro and El Camino Real de los Tejas, plus the Route 66 Corridor Preservation Program.

He holds a BA in Spanish and an MA in Latin American Studies. He has served as an instructor in history at the University of New Mexico and a visiting professor at the Universidad Autonoma de Ciudad Juarez. He lives in Albuquerque with his wife **Eva**, who teaches Spanish at the Santa Fe Community College.

**Aaron** is a good friend of the historic trails and we look forward to working with him on projects in the Kansas City as well as up and down our various historic trails.

## SHAWNEE INDIAN MISSION CEREMONY

On **June 3, 2007** an invitation-only dedication was held at the Shawnee Indian Mission in Fairway with donors of commemorative bricks participating in the unveiling ceremony. Trails Head Chapter had purchased a brick, as did a number of individual members: the **Buddes**, **Alisha Cole**, the **Magerls**, the **Marshalls**, the **Nelsons**, and **Sylvia Mooney**. One special brick, arranged long ago by **Elaine McNabney**, was a surprise for her husband **Kendall** and bore the inscription "Little Elaine Goes West," the title of programs she used to give for OCTA.

**Alisha Cole** is the Site Director of the Mission and serves as Secretary of Trails Head Chapter.



Pointing toward the Trails Head OCTA brick are (l-r) **Kendall McNabney**, **Alisha Cole**, **Pat Traffas**, **Howard Magerl**, **Barbara Magerl**, and **Sylvia Mooney**.

## CHAPTER MEETING AT NFTM

On **Saturday, June 16 at 9:30 a.m.** a Trails Head Chapter meeting was held at the National Frontier Trails Museum. **John Mark Lambertson**, Director of the Museum and Trails Head Chapter member, explained the history, mission, operation, staffing, available resources and future plans of the Museum.

The museum had its grand opening during a momentous blizzard in late **March 1990**. It was the first interpretive trail center on the Oregon-California Trail and had been built by a partnership of the City of Independence and the Missouri Department of Natural Resources. A half-dozen or so have been built along the trail since then from Council Bluffs to Oregon City.

**John Mark** came to the museum in **1992** and has led in the development and interpretation of the NFTM five basic themes. These themes are the four National Historic Trails that course through Kansas City; Lewis and Clark, Santa Fe, Oregon, and California Trails, plus the railroads as the closing chapter of the westward movement.

The museum is operated by the City of Independence and is staffed currently with four full-time and several part-time staff including **John Mark**. Unfortunately, the NFTM budget has not increased significantly since its beginning, but **John Mark** has skillfully managed the museum resources to not only develop modern exhibits to interpret the selected themes, but to continually build visitation by the public.

A principal strategy has been to promote the museum as a research center for the trails and the westward movement. The NFTM library was begun in **1991** when **Merrill Mattes**, arguably the greatest scholar of the Oregon Trail, donated his magnificent library of books and manuscripts to the museum. The library has grown significantly since then and is used extensively today by scholars from across the nation.

The museum has in recent years developed an extensive education program, directed by **Richard Edwards**. Area tours, teacher seminars, classes and educational forums are regularly scheduled. Many activities are also on the calendar for school groups.

The Friends of the National Frontier Trails Museum, organized in the beginning, continues to furnish support and volunteers to the Museum.

Trails Head Chapter is extremely fortunate to have this Museum in its town and **John Mark Lambertson** as Director. He serves on OCTA's Board of Directors and is a highly visible leader in KC Metro local trails community.



Pictured around the library table in a part of the session is (clockwise) Pete Cuppage, John Mark Lambertson, Jim Budde, Kathy Conway (OCTA Headquarters Manager), Tony Miller and chapter President Pat Traffas (sorry about the back of the head, Pat).

## **GREAT CONVENTION IN GERING**

OCTA's Annual Convention was held in Gering, Nebraska **August 6-11**, hosted by the Nebraska Chapter.

It was a terrific location, with most of our evening events at venues that had the Scotts Bluffs as a backdrop in the setting sun. Unbelievable scenes and color!

Couple that with bus tours along some of the most famous sites of the Oregon-California Trail like Chimney Rock, Scotts Bluff, Ash Hollow, Fort Laramie, the spectacular Guernsey ruts in rocks, etc., and the convention could hardly miss being a wonderful experience for all.

This year is the 25<sup>th</sup> anniversary of the founding of OCTA, which occurred in 1982 at a meeting in Denver. The keynote speaker was **Greg Franzwa**, who was instrumental in the founding, became OCTA's first president and edited the Overland Journal for the first six years.

The dozen or so that met in Denver became the first Board of Directors and made a lot of early decisions that have served OCTA well over the years. From all accounts, OCTA is the flagship support organization among the seventeen National Historic Trails and the Trails Head editor Ross Marshall is not bashful about saying so. It is not perfect, but we can be proud of the organization to which they belong.

Among the various meetings and workshops was the Chapters Workshop, pictured below.



Above is Duane Iles, OCTA Membership Committee Chair, in the far center addressing the workshop. Others (clockwise from him) are OCTA HQ Manager Kathy Conway, WY Chapter Pres. Pinky Ellis, NE Chapter's Bill Peterson (standing), Cal-Nev Chapter VP Bob Evanhoe, OCTA Assoc. Manager Travis Boley (the back of his head!), Trails Head VP Pat Marshall, Gateway Chapter President Bill Leppert, CO Chapter's Peggy Watson, OCTA Treasurer Turner Rivenbark and Crossroads Chapter President Oscar Olson,

Among the over 300 in attendance were a good number from Trails Head Chapter, including Board of Directors member **John Mark Lambertson, Kendall McNabney, Tony Miller, Kathy Conway, Tom McCutcheon, Lu Ann Hunter, Michele and Mike McGeeney, Jim and Judy Budde, Carl and Irene MacDonald, and Pat and Ross Marshall.**

Next year, the convention will be in Nampa, Idaho. 2009 will be in Loveland, Colorado.

### **TRAILS HEAD PLANNING MEETING**

Trails Head met at the Chapel ("Pat's Place") for a planning meeting at 5:00 p.m. on **Wednesday, August 22.** Present were **President Pat Traffas, Vice President Pat Marshall, Secretary Alisha Cole, Treasurer Jim Budde, Dick Nelson and Arnold Cole.**

They reviewed the arrangements for the **September 14** Dedication of Gardner Junction Park at **3:00 p.m.**, and also for the Festival of the Trails the next day in Gardner. The chapter planned to have an information booth there and will need volunteers to handle it.

Those attending also reviewed the MET (Mapping Emigrant Trails) Mapping, Marking, and Monitoring Workshop on **May 5-6** sponsored by NPS and OCTA, with **Dave Welch** in charge. Those are the three steps in the MET. It was held in Kanwaka Community Center just west of Lawrence.

Attending from Trails Head were **Tony Miller, Ross Marshall, Bob Burkhart and Arnold Cole.** The chapter has begun its local mapping efforts west from Lone Elm with **Ross Marshall's** leadership.

### **GARDNER JUNCTION PARK GROUNDBREAKING**

On **Friday, September 14, at 3:00 p.m.**, a Groundbreaking Ceremony was held at the Gardner Junction Park site, two miles southwest of Gardner, KS. on U.S. Highway 56 at 183<sup>rd</sup> St.

The project aim is to improve the accessibility and the historical interpretation at this decades-old site. The site, which is about ¼ mile south of the actual junction of the Independence and Westport Routes and where the Oregon-California Trail left the earlier Santa Fe Trail, has been a small three-acre roadside park with a single Kansas State Historical Society upright interpretive marker.



**Above is (l-r) Trails Head member John Atkinson, who has served as committee chair for the project, Karen Angell, Director of the Gardner Museum, Congressman Dennis Moore, and keynote speaker Trails Head member Craig Crease who reviewed the history of the trails.**

The project was initiated nearly five years ago by the Santa Fe Trail Association and will be the first of several along the Santa Fe Trail and likely along the Oregon-California Trail.

The above plan was simple, but a new and safer entrance to the small park from the highway became necessary which added substantially to the cost. A project which was at first projected to cost maybe \$30,000 ended up costing over five times as much!

A transportation enhancement grant, using federal SAFETEA-LU funds was obtained through the help of the Kansas Department of Transportation. With this grant and money contributed by most of the project partners, including Trail Head, the project was funded.

This project was a good example of what can be done on trails when partnering is the strategy. Among the partners were Trails Head Chapter, OCTA national, Santa Fe Trail Association and its local Missouri River Outfitters Chapter, Kansas City Area Historic Trails Association, Kansas Department of Transportation, Kansas State Historical Society, National Park Service, City of Gardner, Gardner Museum and Historical Society, and the Johnson County Museum.

The ownership of the site has been transferred from the Kansas Department of Transportation to the City of Gardner.

About 20 members of trails groups were among the 50 people attending the ceremony.

Completion of the project will be by mid-November. Be sure to drop by and see it.

## **FESTIVAL OF THE TRAILS**

Trails Head Chapter had a booth/activity during the Festival of the Trails on **September 15** in Gardner. Gardner is the site of a Race Village for The Great Santa Fe Trail Horse Race and Endurance Ride, a unique 800-mile endurance ride beginning in Santa Fe, NM. The race concludes in Independence, MO on **September 15**.

The Ride somewhat commemorates the historic ride of Francis Xavier Aubry in 1848. He made a wager that he could make the ride from Santa Fe to Independence in under six days. Well, he was exhausted, saddle sore and \$1000 richer for arriving in just five days and 15 hours!



## CHAPTER MET MAPPING BEGINS

Under a cooperative agreement with the National Park Service, Trails Head Chapter began the 'Mapping Emigrant Trails' project for the Oregon-California trails in the KC Metro area in 2007.

The basic purpose is to find and assess the various resources on and along our trail routes, including ruts and swales, sites, markers, and other physical features.

Obviously since most of the trail in the Kansas City area is on private property, the first task is to go out and meet and establish rapport with the landowners. That was the purpose of the first four team days on the trail. Trails Head participants had a delightful time meeting the landowners, and without exception, they had a friendly reception.

The second task will be to get on the ground and look for the resources. Since most of the local land with possible trail remnants in the KC area is in corn and beans, Trails Head members can't get on the ground until November.



The question was asked as we set out was "which direction is the trail". As you can tell, we have a lot to learn! (l-r) is Mary Conrad, Arnold Cole and Dick Nelson



Above is (l-r) Bob Boland, 90-year-old resident Dale Baker who lives just southwest of Gardner near the Westport Route, Rob Cook and Lee Kroh

In this first phase, Trails Head participants have contacted most of the landowners along the Independence Route from Lone Elm at 167<sup>th</sup> and Lone Elm Road, through Gardner, past the Junction, north to the old Sunflower Ordinance Plant property and across Captain's Creek to the Douglas County line. The next phase will be to cover the ten miles or so to Lawrence this winter or early spring.

Pictured on this page are the nine different chapter people that joined leader **Ross Marshall**. Eventually all this information will have GPS coordinates and be recorded on 7½' USGS



Above is (l-r) Eva Allen, Pat Marshall and Michelle Corbin, who lives at 183<sup>rd</sup> and Four Corners Road. Trail goes through Corbin's yard.

quadrangle maps as well as entered digitally into an NPS database which will be at least partially accessible by the public (sensitive information like sites on private property will be guarded). This is a trail mapping effort that is being conducted by many OCTA chapters under the leadership of OCTA National Preservation Officer **Dave Welch**.

### **PIONEER CROSSING PARK**

Another historic trails park has been completed and dedicated in the Kansas City area. And spectacular it is!

A dedication ceremony was held **September 20, 2007** for the Pioneer Crossing Park, which is on the south side of Shawnee Mission Parkway, about ½ mile west of I-35 in Shawnee.



**Speaker Craig Crease**



**The crowd at Pioneer Crossing Park**

**Craig Crease** spoke on the history of the Santa Fe, Oregon, and California National Historic Trails, as well as the California Road and the Military Road which are within sight of the park.

The centerpiece of the park is a magnificent sculpture by **Charles Goslin** of several near-life-size emigrant and freight wagons being pulled by oxen. **Charles** is currently a Shawnee resident, but is a prominent artist who has painted historical murals in several city halls around town including Shawnee, murals in the National Frontier Trails Museum and countless paintings.

Above is the sculpture and crowd at the dedication.

## INDEPENDENCE LANDING OVERLOOK FINISHED

The final landscaping and exhibits are now in place at this historic site in Sugar Creek, MO. The project was completed this fall through a cooperative agreement between owner LaFarge Cement Company and the National Park Service.

The site overlooks the Missouri River and, along with Blue Mills Landing a few miles to the east, is one of two landings used by travelers on the Independence Route of the Santa Fe-Oregon-California Trail.



Looking north at Independence Landing

Plan to stop by this site at the north end of River Blvd. from Independence and enjoy these improvements and the four new interpretive wayside exhibits. LaFarge welcomes the public to the site during daylight hours, but the gate is closed at night. Many of Trails Head members worked on this project, but KCAHTA member Jane Mallinson spearheaded the project and has worked extensively over the years to preserve and interpret this historic site.

## ANNUAL MEETING HELD

The Trails Head Annual Meeting was held at the Shawnee Indian Museum on **Thursday, November 8 at 5:00 p.m.**, hosted by the **Mission Director Alisha Cole**, Trails Head Secretary. **Vice President Pat Marshall** called the meeting to order at 4:30 p.m. in the absence of **President Pat Traffas**, who had recent surgery.

**Treasurer Jim Budde** distributed his financial report showing a balance of \$5443.82 at the end of September.

We elected 2008 officers as follows:

- President – Pat Marshall** (new)
- Vice President – Arnold Cole** (new)
- Secretary – Alisha Cole**
- Treasurer – Jim Budde**

**Preservation Chair Ross Marshall** reported on the progress of the chapter trail mapping project, which is being done under a National Park Service cooperative agreement. Winter is a good time to get out ‘on the ground’ weather permitting. One of the exciting results was to find the actual location of Captain’s Creek Crossing, near the Douglas County border.

**Eleanor Craig**, Kansas State School for the Blind, shared the ongoing success of her important program that brings the trails to life for the visually impaired. She has recently been notified of

recognition for this program through a joint program of the National Endowment for the Humanities, the National Endowment for the Arts, and the Institute for Museum and Library Sciences. She is to be honored at the White House for her efforts. Congratulations to **Eleanor** and her outstanding work!

**Travis Boley**, OCTA Association Manager, reported that the 2008 OCTA Convention is scheduled for Nampa, Idaho, **August 5-9**. The 2009 meeting is scheduled for August 18-22 in Loveland, Colorado. A date and location for the 2010 meeting is yet to be determined.



Above are the new chapter officers elected at the annual meeting. **Chief Glenna Wallace** (l-r) is **President Pat Marshall**, **Vice President Arnold Cole**, **Secretary Alisha Cole** (not related) and **Treasurer Jim Budde**.

**Travis** also handed out a flyer regarding the OCTA membership drive and the opportunity to donate to OCTA through shopping online at <https://octa-trails.org-store/>. He also provided a list of the OCTA Board and their email addresses.

**Alisha Cole** then introduced **Chief Glenna Wallace**, Eastern Band Shawnee. **Chief Glenna** (pictured above) spoke on the impact of the Shawnee heritage on the lives of tribal members today. The Eastern Shawnee were historically the more assimilated of the three Shawnee tribes. As a result, they are working to regain the rich heritage and traditions that have been lost.

## **MAPPING UPDATE**

Several attempts have been made in the past by trail groups to verify the location of Captain's Creek Crossing of the Oregon-California Trail, which is near 135<sup>th</sup> and Evening Star Road a mile east of the Douglas County Line.



Pictured above in the bed of the Captain's Creek Crossing near the Douglas County line on August 22 is (l-r) Rob Cook, Lee Kroh, local resident Bob Miller, and Pete Cuppage.

In 2006, when **Rob Cook**, **Drew Bodner** and **Lee Kroh** were in the area they met a local resident **Bob Miller** who has lived and farmed in the area all of his life.

He informed them that he knew where the crossing was and would be glad to show it to them at a later date. He said he and the neighbor boys would ride their horses to the crossing and that they fished and swam in the creek at the crossing many times in their youth.

This past **August 22**, **Lee Kroh** contacted **Mr. Miller** and **Lee, Rob Cook, Pete Cuppage** and **Ross Marshall** met him at his nearby house on Evening Star Road and went to the crossing.

We all agreed with **Mr. Miller**. The crossing area had low banks and a good rock bottom of stones for 50-100 yards in both directions. It also lined up with the nearest 1855 General Land Office trail survey points. The trail proceeds northwesterly (not visible) about a half-mile through some hay fields and intercepts Evening Star Road at one of KCAHTA's "Trail Crossed Here" markers.

There was an additional point of interest. A couple of diaries of the 1850s mentioned inscriptions of names on a boulder somewhere near the crossing. **Mr. Miller** knew nothing about such inscriptions and there were no boulders in the entire area. The only rocks were the countless small plate-sized flat rocks in the crossing itself.

Getting to know local landowners is indispensable in finding the trail and the Trails Head surveyors appreciated **Bob Miller's** help in locating this important crossing.

## EXECUTIVE COMMITTEE MEETING

On **Tuesday, November 27, 2007 at 5:00 p.m.**, the Executive Committee met at the Shawnee Indian Mission. **President Pat Marshall** called the meeting to order.

We reviewed the very busy year of 2007: planning meetings, OCTA Mid-Year Board, Hickok Trek XXXV, History Days, Gardner Junction Dedication, Trails Festival, Pioneer Park Dedication, Independence Landing finished, fall mapping accomplished, Trails Head Annual Meeting, etc.

**Treasurer Jim** reported \$5401.07 in our account. We have 70 members, and rising!

**President Pat** appointed the following committee chairs for 2008:

Preservation, mapping, marking – **Ross Marshall**

Education – **Judy Budde**

Awards – **Dick Nelson**

Nominations – **Arnold Cole**

Programs – **Mary Conrad, Alisha Cole, Kathy Conway**

Liaisons – **Eleanor Craig** – School for the Blind

-**Travis Boley** – OCTA National and conventions

-**Ross Marshall** – Partnership for the National Trails System

Project follow-ups – Mapping, Tidings newsletter, Gardner Junction Park markers, bus tours, chapter meeting programs, follow up with St. Mary's marker, etc.

The members discussed schedules: April 19 Quantrill bus tour, June 7 National Trails Day, OCTA Convention in Nampa, Idaho, Trails Head Annual Meeting, plus several others.

## 2008



### **PAT MARSHALL PASSES**

**Pat Marshall**, President of the Trails Head Chapter and wife of **Ross Marshall**, passed away on **February 12, 2008** after a brief illness.

She had undergone surgery and treatment for lung cancer in 2006, but the cancer was in remission. She died from a sudden attack of what is called 'organizing pneumonia', which is basically lung failure.

**Pat** was born in Independence and married Robert Stickler, a Baptist pastor who died from a brain tumor. She had four children, seven grandchildren and seven great-grandchildren.

Her career was as a licensed Nursing Home Administrator in the state of Missouri, winning several awards including Missouri's 'Administrator of the Year'.

She married **Ross Marshall** in 2004 and immediately fell in love with our national trails. They traveled extensively across the nation covering most of the National Historic Trails.

**Pat** served as Vice President and President of Trails Head chapter, was a Board member of the MRO Chapter of SFTA and was very active with the River Bend Chapter of Lewis and Clark and the Kansas City Area Historic Trails Association.

**Pat** also was the national Membership Chair for the Partnership for the National Trails System.

She loved OCTA and Trails Head Chapter and quickly made countless friends. **Pat** loved to laugh and found joy in most everything in life and always tried to see the best in everyone. She was a special lady and will be greatly missed.

### CHAPTER MEETING HELD

On a cold and snowy **Thursday night on February 21**, the chapter held a membership meeting at the Shawnee Indian Mission. **Vice President Arnold Cole** (now President with **Pat Marshall's** passing) called the meeting to order at **6:00 p.m.**, with a moment of silence for **Pat**.

The upcoming calendar of events was reviewed including **April 19** Quantrill bus tour, **June 7** Rendezvous, Sapling Grove Park dedication of new markers probably in late June, and the OCTA Convention in Nampa, ID **August 4-9**.

**Fred Markham**, retired from the Kansas Dept. of Transportation, was there to talk about the new seeding at Gardner Junction Park to be done this spring. Volunteers will be needed.

**Alisha Cole**, Site Director of the Mission, mentioned that the Mission will host fourth-graders from Westwood View School on **May 1** for educational demonstrations of life on the trail.

The presentation of Life Member Awards was not possible since the weather prevented anyone coming from OCTA Headquarters. The chapter will do that at a later meeting.

**Mary Conrad** presented the program that included slides on the many Potawatomi Indian removals and in particular on the 1838 Trail of Death. From 1820 to 1841, Potawatomi Indians signed 47 treaties before their removals were considered complete. In the 1820s, the Potawatomi remained in their homeland (northern Indiana, northeastern Illinois, southern Wisconsin, and southern Michigan), but accepted the shrinkage of their lands into many small reserves. In the 1830s, federal officials had to deal with each small entity to execute removals.

In 1833, the first official Potawatomi removal transferred some tribal members to a Kickapoo reservation in the vicinity of Ft. Leavenworth. As time passed, a few more Potawatomi groups traveled to the Ft. Leavenworth area, but many more entouragees were sent to Iowa. While the Iowan Potawatomi were supposed to settle in the Council Bluffs area, most inhabited other areas, like the area that would become the Missouri Platte Purchase and what we now know as southeastern and south central Iowa. The Fort Leavenworth Potawatomi lived in the Platte Purchase area instead of on the Kansas side of the Missouri River.



**Mary Conrad holds a map showing the route of the 1838 Potawatomi Trail of Death from Indiana through Illinois and Missouri to Kansas Territory**

Many Potawatomi slated for removal did not want to be associated with the Council Bluffs Agency because they felt they had been betrayed by the chiefs who had agreed to go to Iowa. Thus the Osawatomie Agency in Kansas Territory was created. Then various Potawatomi groups moved to eastern Kansas over the span of a few years.

Shortly after federal officials finally successfully consolidated the Potawatomi in Iowa and most of the Platte Purchase Potawatomi into the vicinity of Council Bluffs, most of these Potawatomi were removed to lands under the control of the Osawatomie Agency in Kansas. The Potawatomi that were supposed to have been on the Kansas Kickapoo reservation finally decided to move to land near Ft. Leavenworth where they officially (on paper) had been located from 1833 onward.

By 1838 the Potawatomi still in their homeland had refused to go west. In that year, troops rounded up 850 to 1000 that then were forced to walk to Kansas. Three of the captured chiefs, including Menominee, refused to walk, so a jail wagon transported those three while their followers and other chiefs treaded westward. Many in this 1838 caravan became sick and could not keep pace, so a second caravan lagged behind the main trekkers from early September until toward the end of October. Around 40 died on this journey from September 4 to November 4. Now this 1838 trek is called the Trail of Death.

In 1840 troops rounded up 439 more Potawatomi from northern Indiana. These were forced to walk to Peru, Illinois where they were sent by steamboat west to Westport, Missouri before they trekked south into Kansas Territory. Within a year or two, the federal government declared all Potawatomi had been removed from the East, even though that was far from true.

In the book *The Potawatomis: Keepers of the Fire*, R. David Edmunds estimates the tribe numbered around 6000 at the time of the many removals. Because of time, **Mary** did not cover the Potawatomi who avoided removal by going to Mexico and to Canada and even by staying in their homeland. Those elements are yet more pieces of the complex history of the Potawatomi during the first half of the nineteenth century.

## **EXECUTIVE COMMITTEE MEETING**

Trails Head's Executive Committee meeting was held on **Monday at 6:00 p.m. March 10, 2008** at the Shawnee Indian Museum.

The chapter had conversations on a number of subjects including how to increase our membership. **Jim Budde** will call Kathy Conway and get a list of OCTA members east and west of Kansas City.

Those present discussed the loss of **Pat Marshall** as chapter president, who passed away **February 12**. **Vice President Arnold Cole**, who was the chapter president a few years ago, has stepped up to be the new president. We discussed additional trail sites that could use some interpretive markers, and also resuming the mapping efforts later this spring.

The rest of the time was spent on the details of upcoming events like the **April 19** bus tour, **June 7** Rendezvous, Sapling Grove Dedication in June, the annual meeting in November, etc.

## **AARON MAHR TOURS KANSAS CITY**

New **National Park Service Superintendent Aaron Mahr** from the Santa Fe office visited Trails Head members **March 26-27** with the purpose of getting familiar with the historic trails and trail sites in the Greater Kansas City area.



**Ross Marshall** guided him for two days along the Independence and Westport Routes and explained the history and significance of each of the KC area 30+ sites. In addition they stopped at the National Frontier Trails Museum, OCTA Headquarters and Trailside Center.

**Ross** had known **Aaron** for several years when he worked at the Salt Lake City NPS office and he will be a great partner for OCTA to work with in the future.

### TRAILS HEAD TREK XXXVI – April 19, 2008 – Quantrill's Lawrence Raid in 1863

On a delightful spring day, a nearly full bus of chapter members and guests retraced segments of the William Quantrill saga during the Civil War years in Johnson and Douglas Counties.

**Ross Marshall** and **Craig Crease** were the guides. The bus left K-Mart parking on Shawnee Mission Parkway and Antioch at **8:30 a.m.**

Quantrill came from Ohio to the southern Franklin County, KS area at age 19 in the spring of 1857. He had trouble keeping friends and also quickly displayed a tendency to be a petty thief.

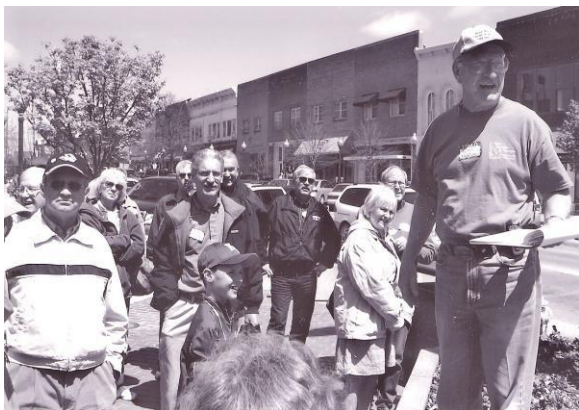
But he made friends with pro-slavers and learned raiding and thievery and evading the law in Lawrence using the name 'Charlie Hart'.

By 1861, he served in the Confederate Army at Wilson's Creek and Lexington. He then began to recruit a gang of bushwhackers that raided towns like Olathe, Shawnee and Aubry in Kansas, plus Liberty and Independence in Missouri over the next couple of years.

On August 18, 1863, Quantrill's gang started toward Lawrence from west of Warrensburg, MO. By the time they crossed the state line just south of Aubry on the afternoon of August 20, the gang numbered 450, armed to the teeth and on the finest horses that could be bought or stolen.

They arrived at Lawrence along the Oregon Trail at dawn on the 21<sup>st</sup> and for the next four hours killed, looted and burned most of the town. Somewhere between 150 and 200 men and boys were killed. The women were not harmed.

On our way to Lawrence, the trekkers visited Olathe, Aubry, Squiresville, Spring Hill, Gardner and Franklin. In Lawrence, they lunched at Eldridge Hotel, which has been rebuilt since Quantrill burned it. They also took a walking tour of Massachusetts Street, most of which was burned, including the Eldridge Hotel, and visited Oakhill Cemetery. The cemetery contains a



**Ross Marshall leading on Massachusetts Street**



**Our group at Oakhill Cemetery**

monument to those that died, plus the family plots of James Lane and the John Speer family, whose two sons died during the raid.

After the raid was over, Quantrill's gang fled south over Blanton's Bridge, which was on the Oregon Trail, then on south toward Baldwin, burning and looting as they went. Intercepted sporadically by Federal troops, they nevertheless completed their escape into Cass County, Missouri by early the next morning.

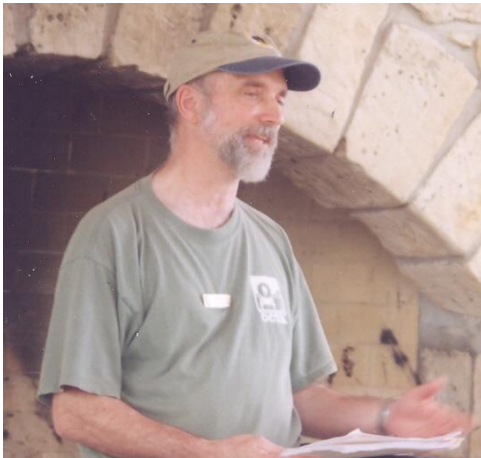
They retraced the escape route and stopped at **Marvin Jardon's** (a passenger on the bus) great-grandfather's farm just southwest of Baldwin where Quantrill's raiders watered their horses.

The trekkers returned to K-Mart at **5:00 p.m.**, having re-lived one of the most famous and deadly raids in the history of our nation and also learning about the life of Quantrill.

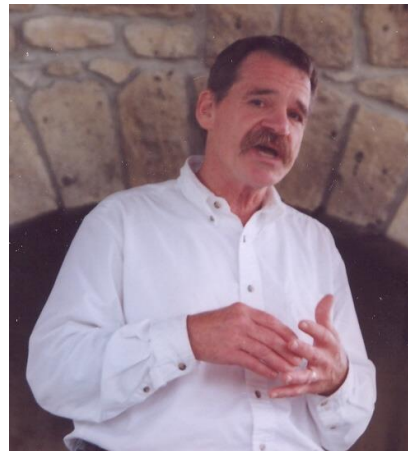
## **RENDEZVOUS 2008**

Rendezvous 2008 was the second of a series of gatherings that focused on partnering on trail projects in the Kansas City area.

Hosted by Trails Head Chapter, as was the 'Rendezvous 2006' gathering, the Rendezvous 2008 was held on **Saturday June 7** (National Trails Day), in the Rendezvous shelter at Lone Elm Park, south of Olathe from **10:30 a.m. to 2:30 p.m.**



**Steve Elkinton, Program Leader for the National Trails System, National Park Service, Wash. DC.**



**Rick Potts, Director of Outdoor Recreation, National Park Service, Washington, DC.**

Over 30 people gathered from all the trails groups and many of the historical societies in the area to become better acquainted, review what the groups have already done together and discover how to partner together on future trail projects.

Various speakers from trails and historical groups, plus public partners like the National Park Service, cities and other entities, reviewed the exciting partnering that has occurred in the past couple of years on trails projects and all the new opportunities that are coming up.

The day began with a tour of Lone Elm Park, led by **Ross Marshall**. Lone Elm was a triumph for the local historic trails landscape, when the original 156-acre farm was purchased by the City of Olathe and transformed into a multi-use park full of soccer and softball fields, yet at the same time preserving the historic campground areas, interpreting the site's history, and building hiking trails for the public's enjoyment.

After a lunch catered by Backyard Burgers, the program started at 1:00 with remarks from **Steve Elkinton**, the National Park Service National Program Director for the National Trails System. **Steve** has been a very special trails partner for nearly 20 years and the local groups were honored to have him as keynote speaker.

Steve's boss, **Rick Potts**, Director of Outdoor Recreation, National Park Service, Washington, D.C., made some brief remarks about the interest of NPS in continuing the partnering that has been occurring in Kansas City. **Rick** mentioned he was looking forward to touring the trail sites in the area in the next couple of days, not having seen the Kansas City area trails before.



**Steve Rhoades, a Principal with Patti-Banks Associates, a local architectural firm.**



**Tim Talbott, Historic Site Manager with Mahaffie Farm and Stagecoach Stop with 'Buck' and 'Tip'**

**Steve Rhoades** is a landscape architect with Patti Banks, Inc., who for years has worked with the Mid-America Regional Council (MARC) and is serving as the planning manager for the development of the MetroGreen.

MetroGreen is a 1000-mile interconnected system of public and private open spaces, greenways and hiking-biking trails that will link seven counties (Jackson, Platte, Clay, Cass, Wyandotte, Johnson and Leavenworth) in the metro area.

Many of the proposed routes of the MetroGreen coincide with the Independence Route, Westport Route and Military Route of our local historic trails in many segments, and intersects with them in other locations. In other words, terrific opportunities exist to partner with MetroGreen on preservation, interpretive signage and public promotion of historic trails!

New segments of MetroGreen are currently under construction at Avila University and the new Highway 71 pedestrian overpass south of Bannister Road, both on the Independence Route of the Santa Fe-Oregon-California Trail.

**Steve** displayed and explained several mounted maps of the MetroGreen routes.

Rendezvous 2008 was very successful! Results will be evident in the months and years to come. Thanks to everyone for coming and participating.

#### **EXECUTIVE COMMITTEE MEETING**

On **Tuesday June 17 at 4:30 p.m.** Trails Head leaders met at Swope Park Interpretive Center at 6601 Swope Parkway. Present were **President Arnold Cole, Secretary Alisha Cole, Treasurer Jim Budde, Travis Boley, Craig Crease, Dick Nelson, Jeanne McGuire, and Ross Marshall.**

Those present talked about ways to increase chapter membership and also who might Trails Head consider for future officer slots.

**Ross** suggested that the chapter start a regular awards program. Everyone agreed, so we will consider some names for awards at the Annual Meeting in November.

Those present discussed the success of the National Trails Day Rendezvous the chapter held June 7 with a theme of how trails work is best accomplished with “partnering” with other trails groups, public entities like the National Park Service, city and county entities, etc.

We discussed details for our remaining 2008 events, meetings, etc.

### **SAPLING GROVE PARK DEDICATION**

About 65 people were in attendance on **July 19 at 9:30 a.m.** for ceremonies to recognize Sapling Grove Park at 83<sup>rd</sup> & Grant as a Certified Site on the Santa Fe National Historic Trail and to unveil three National Park Service interpretive exhibits.

The first of the markers discusses wood, water, and grass - three of the reasons why the site was attractive to any trail traveler. This campground was about 20 miles from Independence and eight miles west of Westport. Travelers on the Santa Fe, Oregon, and California trails used this campground until the mid-1850s. With the opening of Kansas Territory in 1854, the routes of the Santa Fe, Oregon, and California Trails changed to accommodate the large flow of settlers into Kansas. Sapling Grove Campground then fell into relative disuse.

The second marker centers on the traders and trappers who used the campground. In 1827 George Sibley recorded Sapling Grove during his survey of the Santa Fe Trail.

Traders not only continued to use this resource into the early 1850s, but trappers also had used the site for a period of time. In the 1830s, the westbound mountain men of the American Fur Company, including Andrew Drips, Etienne Provost, and Moses "Black" Harris, used the grove as their camp on the first night of their trips to the west. In fact, the mountain men met at Sapling Grove before traveling together.

The third marker highlights the missionaries in the late 1830s that headed to the Northwest, stopping at this site. By the early 1840s, emigrants stopped. Members of the Bidwell-Bartleson party designated Sapling Grove as their rendezvous point in May, 1841. Many gold seekers also stopped there. In the early 1850s, stagecoaches for a time still used the route that passed by Sapling Grove.



**Good attendance**



**Andrea Sharon NPS Interpretive Specialist**

The ceremonies were planned and conducted by **Steve Wien**, Grantioch Neighborhood President.

The first speaker was **Dave Janson**, councilman from Ward 1, who spoke of the ground roots effort that resulted in the renaming and dedication of this historic site.

Overland Park Historical Society President **Florent Wagner** then spoke of this trail site as one of the first ever recorded in Overland Park.

Next was **Ross Marshall** who mentioned the National Trails System Act of 1968 that enabled sites like this to be part of the National Trails System.

**Andrea Sharon** from the National Park Service in Santa Fe was the technical expert in producing the exhibits. She reminded everyone that history does not always happen somewhere else. She said history is in our own backyards when we look.



**Jenna Wilson**

Next was a nearby resident **Jenna Wilson**, who read some of the diary quotes on the exhibits. The dedication was a very successful event. This park is another excellent addition to the growing number of historic trail sites in the local KC Metro area.



**Last speaker was Craig Crease, who reviewed the history of the site**



**Unveiling the exhibits were (l-r) Andrea Sharon, Kathy Lamb, Christopher Lamb and Steve Wien**

Kathy and Christopher, pictured above, first conceived of renaming this park four years ago.

## **OCTA CONVENTION**

The 2008 OCTA Convention was held in Nampa, Idaho on **August 6-9**. Trails Head members attending were **Kendall McNabney, John Mark Lambertson, Kathy Conway, Ross Marshall, Carl and Irene McDonald, Eleanor Craig, Tom McCutcheon, Jim and Judy Budde, Michele and Mike McGeeney**. OCTA Life Members were honored with Life Pins, including Trails Head members **Kendall McNabney, Jim and Judy Budde, Jim Lee, Kathy and Jim Conway and Ross Marshall**.

**Eleanor Craig** (pictured below with **OCTA President Glenn Harrison**) received OCTA's prestigious Distinguished Service Award.



**Eleanor Craig and Glenn Harrison**

The award is one of a string of awards that **Eleanor** has received recognizing her work with Accessible Arts, Inc. in Kansas City, Kansas, that works with visually impaired children.

As a result of the Discovery Trails Program, run in cooperation with the Kansas School for the Blind, she also received the Coming Up Taller Award this past January in ceremonies at the White House, that included **First Lady Laura Bush**.

Under this program, she has annually led several van loads of visually impaired students along one of America's national historic trails. For many years, participants followed the Oregon Trail each summer. This past June, five vans carried students, leaders, film crews and drivers on the Santa Fe Trail for two weeks.

Congratulations, **Eleanor**!

### **FORT OSAGE BICENTENNIAL**

On **Saturday, September 6, 2008** ceremonies were held at Fort Osage on the exact date of its founding 200 years ago by William Clark.

Militia re-enactors, trappers, infantry, and others in period costumes participated in the well-attended event.

A replica of the 1808 15-star 15-stripe U.S. flag was hoisted at the close of the ceremony which was held in the reconstructed fort enclosure.

A new interpretive marker near the entrance, donated by The Native Sons and Daughters of Greater Kansas City, detailing the history of the site, was then dedicated.

The crowd then adjourned to a reception held in the newly opened Visitors Center. On both September 6 and 7, Ft. Osage also hosted a Lower Missouri River Archaeology and history Conference in celebration of this bicentennial.

### **GARDNER JUNCTION AWARDS MEETING**

A joint meeting of the Missouri River Outfitters Chapter of SFTA, Kansas City Area Historic Trails Association and Trails Head Chapter was held at the Gardner City Hall the evening of **August 21 at 6:30 pm, 2008**.

This event was held in order to recognize those persons that played pivotal roles in completing this major trail interpretive site. The site is just over a mile southwest of Gardner on U.S. Highway 56.

It marks the site where the Independence and Westport Routes of the Santa Fe, Oregon and California Trails met and also where the Oregon and California Trails split off from the older Santa Fe Trail.

MRO President **Roger Slusher** opened the ceremony by introducing Gardner Mayor **Carol Lehman** for brief welcoming remarks.



Mayor Carol Lehman greeted the crowd. The four 'backs of heads' are (l-r) Diane Crease, Pete Cuppage, Lee and Dorothy Kroh.



Roger Slusher on the right presents the MRO Outstanding Achievement Award to John Atkinson.

**Melissa Mundt**, Gardner Assistant City Administrator, and **Karen Angell**, Director of the Gardner Museum described the project. They were followed by project committee chair **John Atkinson**.

**Roger** then turned the meeting over to **Ross Marshall**, chair of the MRO Awards Committee, for the presentation of the MRO Chapter awards.

The partners on the project, most of whom were financial contributors to the project, have been recognized on a plaque at the site. They include City of Gardner, Gardner Museum and Historical Society, Johnson County Museum, Kansas Department of Transportation, Kansas State Historical Society, National Park Service, Oregon-California Trails Association, Santa Fe Trail Association, Trails Head Chapter, Missouri River Outfitters Chapter, KCAHTA and Embarq.



**John Atkinson presented the Award of Merit to Melissa Mundt for her wonderful help in coordinating project details with the City.**

**John presented an Award of Merit to Karen Angell for her key support throughout the project.**



**John presented a Certificate of Appreciation to Fred Markham of the Kansas Department of Transportation for his key support on the project.**

**John presented a Certificate of Appreciation to Mike Gardner, project manager for the City of Gardner, who lives next door to the site.**



**Roger presented Certificates of Appreciation to Craig Crease (at left) and to Ross Marshall (right) for their work in researching and proofing the information on the seven interpretive panels on the project, plus promotion and coordination of partner participation.**

This is a significant project for the Greater Kansas City area on a key trail site that could not have been completed without the participation of all the partners as listed above.

A special thanks to the MRO Chapter of SFTA for leading in this joint award ceremony.

### **EXECUTIVE COMMITTEE MEETING**

On **Thursday August 28 at 7:30 p.m.** the Trails Head Executive Committee met at **Dick Nelson's** house. Trails Head has had a great year in adding new members – quality ones too!

**Treasurer Jim** said the chapter has \$4835.93 in the account, including \$1417 in the KC150 Grant.

**President Arnold Cole** agreed to be the Nominating Committee Chair. He will enlist other members and be ready for the Annual Meeting, which will be Tuesday, November 5 at 4:30 p.m. at the Westport Library.



Those present discussed the 150<sup>th</sup> Anniversary of Westport activities in which some of Trails Head's members are involved. **Craig Crease** and **Ross Marshall** will be leading group walking tours for a couple of days. Trails Head and KCAHTA will share an informational table.

Discussed was the possibility of having the OCTA Convention here in 2012, which would be 12 years since Trails Head hosted the Convention 2000.

We reviewed the excellent Sapling Grove and Gardner Junction Park dedications as well as the Fort Osage Bicentennial. Upcoming is the Upper Independence Landing Dedication October 24.

### **NATIONAL TRAILS SYSTEM ACT**

**October 2** was the 40<sup>th</sup> Anniversary of the passage of the NTSA by Congress by which all of the current 26 National Scenic and Historic Trails have been individually added, also enacted by Congress. Trails like the Santa Fe, Oregon, California, Lewis and Clark, Pony Express National Historic Trails and Appalachian, Pacific Crest and Continental Divide National Scenic Trails, etc., are part of the National Trails System.

The Partnership for the National Trails System was formed and all 26 of the National Historic and Scenic Trails are part of the PNTS.

Trails Head member **Ross Marshall** is the current president of PNTS and was invited to speak on **October 2** at the Smithsonian in Washington D.C., along with other political and agency leaders, as part of the anniversary observance.

### **INDEPENDENCE LANDING RE-DEDICATED**

With approximately 50 people attending, the overlook park at the Independence Landing was re-dedicated on **Friday afternoon, October 24 at 2:00 p.m.**

Traversed by the Lewis and Clark, Santa Fe, Oregon and California National Historic Trails, this site at the north end of River Boulevard in Sugar Creek is one of the key historic trail sites in the entire Greater Kansas City area.



**Steve Kidwell**



**Jane Mallinson**

Pictured above is **Steve Kidwell**, properties manager for LaFarge NA, Inc., owner of the site, functioned as master of ceremonies for the event. He has worked untiringly representing the landowner and coordinating the dozen or so partners that contributed time, expertise and resources to the project over the last four years.

He is a new Trails Head Chapter member and received the 2008 Distinguished Partner Award (see the article below for the story).

The site has been extensively enlarged from the small overlook that had a single stone monument that was dedicated in 1983 during the first Oregon-California Trails Association Convention. Sidewalks, fencing, sitting benches, a parking area and landscaping have also been added.

Five National Park Service wayside exhibits have been installed that interpret the story of the site and each of the four national historic trails.

One of the speakers was Trails Head Chapter member **Jane Mallinson** who has worked to promote the history of this site for three decades. She led the effort to mark the site in 1983 and was a key leader in making the arrangements for this event.

Additional speakers included Sugar Creek Mayor **Stanley Salva**, **Susan Davis** of the Sugar Creek Business and Civic Club, **Sharon Brown**, National Park Service Regional Chief of Trail Operations from Santa Fe, and Trails Head member **John Mark Lambertson**, director of



**Sharon Brown**



**John Mark Lambertson**

the National Frontier Trails Museum in Independence. At the close of the program, a dedication plaque was unveiled that includes the names of all the partners, both individuals and organizations including Trails Head Chapter, that made this project possible.

This project is one of many that have been completed or are underway on the historic trails in the Kansas City area. Pretty exciting!

### **WESTPORT 175<sup>TH</sup> ANNIVERSARY**

Trails Head Chapter, on **October 25, 2008** participated at the 175<sup>th</sup> anniversary of the 1833 founding of Westport. John Calvin McCoy built a log trading post that year on the northeast corner of Westport Road and Pennsylvania, occupied today by McCoy's Public House Restaurant. The next year he platted Westport which became a key outfitting town for Santa Fe, Oregon and California Trails.

Various activities were scheduled throughout Westport all day at seven different venues, including walking tours of the town led by **Craig Crease** and **Ross Marshall**. Other Trails Head and KCAHTA members, located on a Westport Road sidewalk, shared an informational table with free handouts.

A dedication ceremony was held at the 1855 Harris-Kearney House signifying it as a certified site on the Santa Fe National Historic Trail. **Sharon Brown** of the National Park Service in Santa Fe spoke at this event.

A ‘shotgun wedding’ was held as well as a vignette concerning a ‘runaway bride’!

Other events during the day included various re-enactors portraying John McCoy, John Sutter, Albert Gallatin Boone and various others, including border war re-enactors.

## ANNUAL AWARDS MEETING

The Trails Head annual membership meeting, held **Wednesday, November 5** at the Westport Branch Library, included our first annual awards program presentations, although the chapter had given awards of appreciation from time to time beginning in 1987. 12 were present, including **President Arnold Cole, Treasurer Jim Budde, Mary Conrad, Craig Crease, Ross Marshall, Eva Allen, Eleanor Craig, Pete Cuppage, Dick Nelson, John Forbes, and Steve Kidwell.** **President Arnold Cole** convened the meeting at **5:00 p.m.**

The first item was the re-election of **President Arnold Cole** and **Treasurer Jim Budde.**

**2009 President – Arnold Cole**  
**Vice President – vacant**  
**Secretary - vacant**  
**Treasurer – Jim Budde**

The nominating committee had no nominations for Vice-President or Secretary so those positions remain open.

**Treasurer Jim Budde** reported a bank balance of \$4835.33 and 48 memberships.

The Awards Committee, which consisted of **Chair Dick Nelson** and members **Mary Conrad** and **Ross Marshall,** then made the awards presentations.

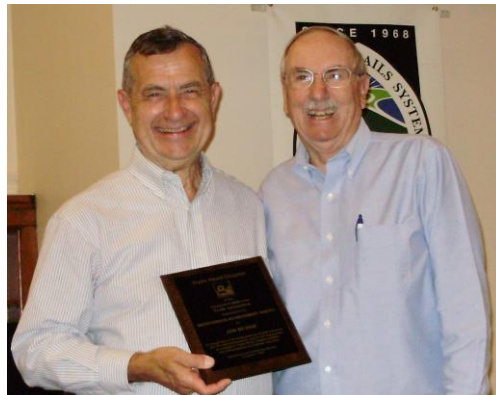
The program was presented by **Alana Smith,** President of the Westport Historical Society, who portrayed Henrietta Harris in first person.

Henrietta married John Harris in Kentucky and they came to Westport in about 1832 with six children and several slaves. They lived in a log cabin at 39<sup>th</sup> and Gillham on her brother Duke Simpson’s farm, a prominent landowner and merchant in early Westport.

Harris soon purchased that land and also lot #1 in Westport on the northeast corner of the current Westport Road and Pennsylvania, which had been the site of John McCoy’s trading post. They built a hotel on that site which burned in 1848. In 1852, Harris re-built it as the three-story brick Harris House Hotel.



**Alana Smith and Arnold Cole**



**Jim Budde and Dick Nelson**

In the meantime, they had moved to a log structure at #314 Westport, on the north side of Westport Road just east of Broadway.

They became very prosperous and in 1855 built a ‘mansion house’ on the ridge on the southwest corner of 39<sup>th</sup> and Main. John Harris died in 1873 and the house passed to daughter Josephine and her husband Charles Kearney, a prominent merchant and trader. Henrietta Harris died in 1881.

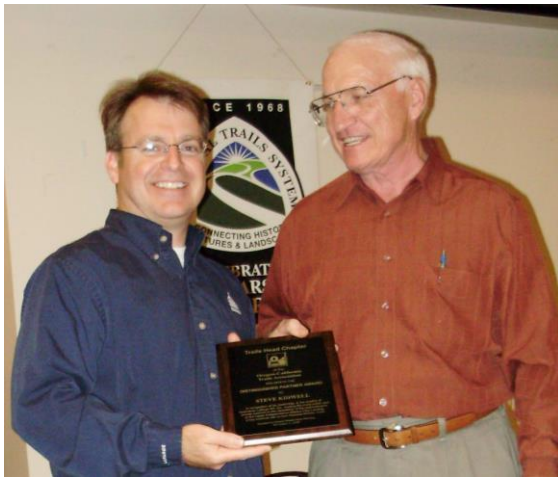
By 1922, the house was purchased by a non-profit group in order to save it from being razed because of the re-routing of Main Street. It was then moved to its present location. It was acquired by Westport Historical Society in 1976 and was completely restored in 1983.

Today, the Harris-Kearney House is the headquarters of the Westport Historical Society and is a Certified Site on the Santa Fe National Historic Trail.

It was a delightful and interesting presentation of Henrietta by **Alana Smith** in her period dress.

**Dick Nelson** presented to **Jim Budde** (left) the Meritorious Achievement Award “*In recognition of his many years as chapter treasurer, OCTA’s national treasurer, and for his many years as a leader in Trails Head Chapter activities and trail projects in the Kansas City area*”.

**Ross Marshall** presented the Distinguished Partner Award to **Steve Kidwell** “*In recognition of his leadership, in the employ of landowner Lafarge NA, Inc., leading the many public and private partners in the completion of the improvements to the Upper Independence (Wayne City) Landing, a key overlook site on four National Historic Trails.*”



**Steve Kidwell and Ross Marshall**



**Mary Conrad and Eleanor Craig**

Above is **Mary Conrad** presenting a Certificate of Appreciation to **Eleanor Craig** “*In recognition of her years of service as Coordinator of the Discovery Trails Program for the Kansas School for the Blind and for leading annual tours with visually impaired students on historic trails across the western part of the United States*”.

Eleanor earlier this year received the Coming up Taller Award from **Laura Bush** at the White House and also OCTA’s Distinguished Service Award at the annual convention in Nampa, ID.

She has had quite a year and it is well-deserved!

**2009**

## PLANNING MEETING

On **Tuesday January 6 at 5:30 p.m.** we met at McGilley-Hogue (**Pat's Place**) to plan Trails Head schedules and events for 2009. Present were **President Arnold Cole, Treasurer Jim Budde, Dick Nelson, Ross Marshall, Craig Crease, Pat Traffas** and **Eva Allen**.

**Jim** reported a total of \$4792.72 in the chapter account which includes \$1417 remaining in the KC150 Grant. We discussed some alternatives for enlisting a vice president and a secretary for the open positions.

The group would like to have a March chapter meeting with a speaker, so they started planning that.

Our Trek XXXVII along the original route of the Santa Fe Trail is scheduled for **June 6**. That will be the original 1821 Becknell Route and variations of it in the 1820s until Independence was founded in 1827. **Craig Crease** and **Ross Marshall** will be the guides.

We talked about maybe doing a cleaning day for our various wayside exhibits – maybe **May 9**. More serious discussions ensued about hosting the OCTA 2012 Convention.

## CHAPTER MEETING

On **Monday, March 2** Trails Head held a Winter/Spring Chapter Meeting at Trailside Center at **7:00 p.m.** 26 people were present including **President Arnold Cole, Treasurer Jim Budde, Ross Marshall**, his fiance **Shirley Lee, Ron and Linda Wagner, Ann O'Hare, Lee and Dorothy Kroh, Pete Cuppage, Eva Allen, Bob Burkhart, Kendall McNabney, John Forbes, Michelle McGeeney, John Mark Lambertson**, plus speakers **Jim Howk** and **Ben Kelly**, and others.

**Ross Marshall** did a quick update on trail site markers like Town of Kansas, Strang Park and other sites. He also reviewed our planned **June 6** bus tour on the Original Santa Fe Trail Route.

We approved \$250 for Shawnee Indian Mission's Theme Days Program on May 1 for some 4<sup>th</sup> grade students from Westwood View Elementary School to learn how settlers lived, performed by several re-enactors.

Our program "Views of the Oregon Trail from KC to Independence Rock" was presented by **Jim Howk** and **Ben Kelly**. **Jim** and his wife **Annette** and **Ben** traveled 2000 miles in eight days on the Oregon Trail last year as far as Independence Rock in Wyoming.

They distributed copies of their detailed itinerary and maps, plus **Ben** showed a total of 155 Power Point slides! It was an excellent program!

## CONGRESS PASSES TRAIL BILL

For over a decade many of OCTA members have been working with Congress to get the Trails Feasibility Study Bill passed and as of **March 23** it has now passed both the House and Senate as part of the Omnibus Public Lands Bill S-22 left over from the 2008 Congress and attached to 2009's House Bill HR 146.

**President Obama** is scheduled to sign it into law **Monday March 30**.

The trail bill provides for the study of dozens of additional "alternate/cutoff, etc." routes along the Oregon, California, Mormon Pioneer and Pony Express NHTs – the so-called 'corridor trails'. This study when completed by the National Park Service should eventually result in another bill introduced in Congress to officially designate these routes to be added to the appropriate National Historic Trails.

When the Oregon National Historic Trail was designated by Congress in 1978, it was a single line from Independence, MO to Oregon City, OR. The myriad of alternate routes, cutoffs, etc.,

that make up the historic Oregon Trail, such as our Westport routes and Ft. Leavenworth routes were not included. The California National Historic Trail was designated in 1992, but it also did not include the additional routes in our area - just the “single line” of the Oregon Trail.

The Santa Fe National Historic Trail, designated in 1986, did include the Westport routes but not the Ft. Leavenworth routes.

In the coming months, OCTA will be working with NPS to begin the work of completing this study which eventually should result in getting all the Kansas City area local routes designated by future legislation.

Now there will be 30 trails in the National Trails System with the addition of three new National Scenic Trails – Arizona, Pacific Northwest and New England – the first NSTs since 1983. The Washington-Rochambeau Revolutionary Route NHT was also added.

### **EXECUTIVE COMMITTEE MEETING**

On **Thursday, May 28, 2009** the Executive Committee met at **6:00 p.m.** at **Arnold Cole’s** house. Present were **President Arnold Cole, Treasurer Jim Budde, Eva Allen, Ross Marshall** and **Shirley Lee**, and **Dick Nelson**.

Those present discussed the progress on markers for Strang Park, Town of Kansas and other sites, such as the St. Mary’s plaque reinstallation.

The **June 6** bus tour details were reviewed. We only have 15 passengers at this point.

We discussed potential people to fill the vacant positions of Vice President and Secretary.

### **TRAILS HEAD TREK XXXVII – Original SFT Route – Ft. Osage, Swope Pk. 9 Mi Pt**

Last **Saturday June 6** was a perfect weather day to enjoy a tour of the 1820s trail sites in Jackson County that pre-dated the routes which have been designated as the Santa Fe, Oregon and California National Historic Trails.

The trail routes involved were the Blue Springs route, a segment of the Harmony Mission Road, a segment of a later trail from Blue Mills landing and also segments surveyed by George Sibley in 1825 and 1827 on the Santa Fe Trail. We visited sites that are not commonly known and have not been interpreted for the public yet.

The guide for the day was **Craig Crease**, who for many years has done primary research on these routes that has led to a clearer understanding of our local trails system.

The tour left from near the Independence Square and proceeded to Fort Osage (founded in 1808), that pre-dated the entire trails era and which became the starting point for the tour.

The bus went south and west always staying on the east side of the Little Blue River and riding the ridge as did the early trail to the Blue Springs.

The first stop was at the old Mill Park in Blue Springs south of I-70 on Woods Chapel Road. This was the site of several springs that served as a convenient rendezvous point for early Santa Fe Trail wagon trains and was named Blue Springs.

The suburban town of Blue Springs is, of course, named for this specific site.

George Sibley on July 27, 1827, stated “...*Camped at Blue Spring. The Spring is a pretty good one, tho’ nothing extraordinary.*” Since there were several springs at the site, apparently none were particularly large.

With the founding of Independence in 1827, the route of the Santa Fe Trail began heading for the Square and south on the Blue Ridge, not south on the ridge on the east side of the Little Blue as before.



At the park site on the north bank of the Little Blue as described below, Craig Crease, on the left, explains about Sibley's compass episode.



An obviously happy tour group on a sunny spring day on the banks of the Little Blue River

The bus followed the Blue Springs route into southern Jackson County to where Byers Road crosses the Little Blue River at 139<sup>th</sup> St. in Grandview. On Friday morning **July 6, 1827**, Sibley's compass was ruined there by lightning striking his tent, shocking Sibley as well. He was therefore forced to stop his survey.

After lunch at Western Sizzlin' in Grandview, the tour continued south on Arrington Road arriving at Holmes and Kenneth Road. Just west of here on private property are the graves of the John Bartleson family. Bartleson was the captain of the 1841 Bidwell-Bartleson Party that left from Sapling Grove at 82<sup>nd</sup> Terrace and Grant in Overland Park as the first wagon train to California.



The small Bartleson cemetery near Kenneth Road with a Chouteau Society marker



Just west of there the trail crossed the Big Blue River at about 151<sup>st</sup> (Kenneth Road) right on the state line.

This route likely is the one followed by William Becknell in the fall of 1821 as he led the first 'welcomed' trading expedition to the new country of Mexico which has been recognized as the expedition that first opened the Santa Fe Trail.

We then journeyed up State Line Road to Sibley's Nine-mile Point at 79<sup>th</sup> and State Line. This point was where Sibley's 1827 Santa Fe Trail Survey crossed the state line and which was nine miles plus ten chains (660 feet) south of the confluence of the Kansas and Missouri Rivers. Joseph Brown had defined this point in his state line survey of 1823 as where a fresh trace of wagons heading for Santa Fe had crossed.

After traveling south nine miles and ten chains Brown wrote "...To a trace leading from Fort Osage to Santa Fe -Mound on the edge about midway, bears to bottoms leading to the South, they come together."

This is definitely a site that needs extensive interpretation in the future for the public.

We proceeded on to another site on the Sibley survey route on the east bank of the Big Blue River at Gregory Blvd in Swope Park.

Jacob Fowler, returning from west to east in 1822 on the new Santa Fe Trail wrote: "*Friday 5th July ...Sot out Early and at five miles Crossing a large Crick [the Blue River here] 50 yds Wide Runs north the Bottoms and Hill Sides are Well Covered with timber- We Heare Went up a High Steep Hill over some rocks and Continu over High Roleing ground...*"

This was the crossing he was talking about. To the east is the large steep hill.

The tour continued north and east past the 1844 Rice-Tremonti house and explored some additional segments on the several routes to the east and northeast of the Independence Square.

The bus returned to the parking lot just north of the Independence Square at about **4:45 p.m.**

These routes mostly were not part of the Oregon-California Trail, but for Kansas City area local folks, these routes as used by the early Santa Fe Trail travelers were part of the development of easier and quicker routes that later were used by Oregon-California travelers.

## OCTA CONVENTION HELD IN LOVELAND

Several from Trails Head Chapter attended the recent convention on **August 19-22** in Loveland Colorado, the first OCTA has had in that state.



One of the highlights was LaFarge NA, Inc., receiving the OCTA national Friend of the Trail Award for completing the marvelous Upper Independence Landing Overlook Park on its property at the north end of River Boulevard in Sugar Creek, MO. **Jim Budde**, above, receives the award on behalf of LaFarge from the new OCTA President **Bill Martin**.

Another highlight for the chapter was the election of **Duane Iles**, a long-time Trails Head member from Holton, KS, as the new OCTA Vice President. **Duane** has served in recent years as the membership committee chair for OCTA with great enthusiasm. For many years, **Duane** has led in the purchase, interpretation and maintenance of the property that contains the spectacular Alcove Spring just south of Marysville, KS. Congratulations **Duane**.



The convention, hosted by the Colorado-Cherokee Chapter, featured tours and speakers that focused on the Cherokee Trail that runs south to north along the eastern slope of the Rocky Mountains in Colorado. This trail, that was the focus of members of the Cherokee Nation traveling from Oklahoma to California during the gold rush years, is now being studied by the National Park Service, as recently directed by Congress, for possible designation as a route of the California National Historic Trail.

A feature of the convention week was the opportunity for registrants to attend the world premier showing of *In Pursuit of a Dream*. It was a red-carpet event at the restored 1920s Rialto Theater in downtown Loveland. The film, which was shot during an OCTA-sponsored wagon train experience a couple years ago, involved over 20 teen-agers in covered wagons on the trail for two weeks.

OCTA appreciates the hard work by the chapter and in particular **President Camille Bradford**, who also functioned as the convention committee chair for much of the time.

### **AWARDS RECEIVED AT SFTA SYMPOSIUM**

Three long-time Trail Head Chapter members received awards at the Santa Fe Trail Association biennial symposium held in Arrow Rock, MO **September 11-12**.

**John Atkinson** received the Paul Bentrup Ambassador Award, a lifetime achievement award, for his service as SFTA Vice President, chair of several committees, mapping research on the trail in Kansas and for having been a Missouri River Outfitters Chapter President. **John** has also been president of the Gateway Chapter of OCTA.

**Sister Eleanor Craig** of the Sisters of Loretto, Coordinator of the Discovery Trails Program for the Kansas School for the Blind, received the 2009 Education Award for leading her visually-impaired students on the Santa Fe Trail in 2008. **Eleanor**, winner of President Bush's Coming Up Taller Award in 2008, has also led her students on several Oregon-California Trail treks in past years and has received its OCTA Distinguished Service Award.

**Craig Crease** received the Marc Simmons Writing Award for his researched article in the November, 2007 issue of SFTA's *Wagon Tracks* entitled *The Spy Who Came in from the Cold: Dr. John Hamilton Robinson – Secret Agent, Filibusterer, Mexican Revolutionary and Pathfinder on the Santa Fe Trail*.

**Craig**, who has received other writing awards from SFTA, has also received the OCTA Meritorious Achievement Award for his long-time trail research work especially on Kansas City area trails. He currently serves as President of the Kansas City Area Historic Trails Association and just received their Distinguished Partner Award.

### **PLANNING MEETING**

On **Monday, October 9 at 6:00 p.m.**, Trails Head leaders met at the home of **Ross** and his new wife **Shirley Marshall** at 14122 Slater. Additional people there were **President Arnold Cole, Mary Conrad, Dick Nelson, Jim Howk** and **Eva Allen**.

**Treasurer Jim Budde** was absent, but his report showed \$4726.80 in the chapter account. We voted to again provide the lunch expense for the OCTA Mid-Year Board Meeting in Independence next March. Our total expense for the 2007 meeting was \$165.

We voted to donate \$250 for the four KCAHTA Strang Park wayside exhibits project. We also voted to donate \$300 to Eleanor Craig's Discovery Trails Program next **July 10, 2009**.

**Ross** reported on the 10 waysides project at Town of Kansas. No money needed at this time.

**Ross** also reported that Wyoming Chapter will host the 2011 OCTA Convention. Trails Head has been requested to host 2012, which would be the chapter's first in 12 years. The chapter will vote on it at the annual meeting in November.

We decided to investigate having the annual meeting at the new National Archives near Union Station on **Saturday, November 14**. We wanted a tour at 9:00 a.m. and the meeting at 10:00. **Ross** agreed to call the Archives and reserve the times.

## **ANNUAL MEMBERSHIP AND AWARDS MEETING**

The Annual Membership and Awards meeting was held **November 14** at the new Central Plains Region National Archives near Union Station. Members present were **President Arnold Cole, Rob Cook, Lee and Dorothy Kroh, Pete Cuppage, Ross and Shirley Marshall, Dick and Ruby Nelson, Kendall McNabney, Jim Howk, John Forbes, Eva Allen, Jim and Kathy Conway, Kelly Breen and Bill Bundschu**.

We enjoyed a 45-minute guided tour at **9:00 a.m.** of this new facility that features new exhibits on Kansas City history.

After the tour, **President Arnold Cole** called the business part of the meeting to order at **10:00 a.m.** A slate of new chapter officers was presented. Elected were:

**President - Pat Traffas**  
**Vice President - Dick Nelson**  
**Secretary - Mary Conrad**  
**Treasurer - Jim Budde (re-elected).**

**President Pat Traffas** has been a member of Trails Head Chapter since moving to the Kansas City area in 1999. She had previously served as our president for a two-year term.

**Vice-President Dick Nelson** had also served as chapter president, plus vice president and treasurer. He has served on the national OCTA Awards Committee and is currently Trails Head Awards Committee Chair as well as preservation committee chair for the Missouri River Outfitters Chapter of the Santa Fe Trail Association.

**Secretary Mary Conrad** served as chapter president about a decade ago and as secretary and vice president in the early years of the chapter. She also, for many years, was an excellent editor of the *Tidings*. She also currently serves as Vice President of the MRO Chapter.

**Treasurer Jim Budde** has served as the chapter treasurer during most of the 25-year history of the chapter. He formerly was OCTA's Treasurer for over a decade and has served on various budget and audit committees for OCTA

Quite an impressive list of officers for our chapter!

Arnold introduced **Ross Marshall** who told about receiving recent emails from **OCTA President Bill Martin, OCTA Vice-President Duane Iles and OCTA Association Manager Travis Boley** urging Trails Head Chapter to host the 2012 OCTA Convention. As Association Manager, **Travis** also has the new role of supporting host chapters' programmatic planning, financial planning and contract management for OCTA Conventions.

Trails Head's last convention hosting was done in 2000 and by 2012 all other OCTA Chapters will have hosted at least one convention.

After some questions and discussion, **Eva Allen** moved that Trails Head submit a proposal to OCTA to serve as the 2012 convention host chapter and **Dick Nelson** seconded the motion. The vote was essentially unanimous with no opposition votes. Time is not excessively short, but the chapter will need to begin the planning process as soon as possible. A committee needs to be enlisted and **Travis Boley** brought into the process.

Our second annual awards ceremony was conducted by Awards Committee Chair **Dick Nelson**.

The first award was the Award of Appreciation presented by **Ross Marshall** to Trails Head member **Kathy Conway**, OCTA Headquarters Manager, for her 20 years of service and support to OCTA and to our chapter.



**Award of Appreciation recipient Kathy Conway with Ross Marshall**



**Pictured above is the Executive Committee of the Kansas City Area Historic Trails Association, recipient of our Distinguished Partner Award. (l-r) President Craig Crease, Pete Cuppage, Treasurer Dorothy Kroh, Rob Cook, Lee Kroh and Secretary Ross Marshall.**

The second award was the Distinguished Partner Award, presented by **Arnold Cole** to the Kansas City Area Historic Trails Association for its leadership in promoting partnerships for trail work in the KC area. The plaque was accepted by **KCAHTA President Craig Crease**.



**Pictured above is Awards Committee Chair Dick Nelson presenting the Meritorious Achievement Award to Mary Conrad, for Mary's lifetime achievements with historic trails in many organizations in our area including serving as Trails Head President a few years ago.**



**Pictured above (l-r) are Trails Head's new officers elected at the annual meeting in November: President Pat Traffas, Vice President Dick Nelson and Secretary Mary Conrad. (Treasurer Jim Budde was re-elected, but was absent for the picture).**

**Craig Crease** then reviewed trail projects in the KC area. In addition to Sapling Grove Park, Gardner Junction Park and Upper Independence Landing being completed a year ago, two new projects are currently being worked on that were reported in April's *Tidings*.

The first is the Town of Kansas signage project at the pedestrian bridge at the foot of Main Street downtown. Various partners, including the City of Kansas City and National Park Service are involved in this signage project that will include nine interpretive panels installed at the site which is traversed by four national historic trails.

The second project, of which Trails Head Chapter is sharing the lead with the Kansas City Area Historic Trails Association, is at Strang Park at 88<sup>th</sup> and Farley. It will involve four interpretive panels with Overland Park Parks Department and National Park Service as partners.

### **SO WHERE DOES THE MONEY COME FROM?**

You have been reading about Trail Head Chapter's participation in several trail marking projects in the past few years like the Gardner Junction Park, Independence Landing Overlook Park, Sapling Grove Park and now Town of Kansas and Strang Park.

In all these cases, one of the chief partners was the National Park Service, partnering with funding dollars. So where do the dollars come from?

Turn the clock back 20 years and NPS had little, if any, money for projects. The support organizations for each of the trails then formed the Partnership for the National Trails System.

Imagine a square with four corners as below.

**Congress**

**National Park Service, etc.**

**PNTS**

**OCTA, etc**

The U.S. Congress designates each of the national trails, now numbering 30. Congress designates a federal agency to administrate the trail, in our case the National Park Service, the second corner.

The third corner is occupied by support organizations like OCTA, who partner with the agencies like NPS, as Trails Head does in Kansas City.

The fourth corner is occupied by the Partnership that represents the support groups and advocates with Congress for funding on an annual basis. OCTA, SFTA, KCAHTA and National Frontier Trails Museum are all members of the Partnership.

Congress then, because of the work of the Partnership, appropriates money that goes to the agencies like NPS on the second corner. NPS then partners with the trails organizations like OCTA for trail projects. Those organizations pay dues to the Partnership.

See how the square works? Only by this partnering relationship does trails work get done.

### **TRAILS HEAD PLANNING MEETING**

The chapter planning meeting for 2010 was held **Tuesday December 8 at 6:00 p.m.** at Pat's Place. Present were **President Pat Traffas, Vice President Dick Nelson, Secretary Mary Conrad, Arnold Cole, Travis Boley, Ross and Shirley Marshall and Craig Crease.**

They all agreed, because of the low national economy, that we would not hold a 2010 bus tour.

**Ross** suggested the chapter plan a "rendezvous" at Lone Elm Park on National Trails Day, June 5, as Trails Head has been doing every other year since the park opened in 2006. **Pat** agreed to plan the event and **Ross** was requested to contact the Partnership for the National Trails System to see if **Director Gary Werner** could come and speak to the group. Maybe Trails Head could also have a National Park Service person agree to attend.

For the next chapter meeting, the attendees agreed to try to schedule it at Mid-Continent Library in Independence, maybe for **February 13**.

For the April chapter meeting, **Mary Conrad** suggested Grinter House as a location. She will check with the Grinter site administrator on scheduling.

For the annual meeting in November, it was suggested to be at the Missouri Valley Collection at the KCMO Central Public Library. **Mary** will check dates with the administrator there.

Since the chapter has agreed to host OCTA's 2012 Convention, **Ross Marshall** was elected to chair it and to organize the bus tours. **Travis Boley** was present and gave suggestions during our discussions. We will need to select a site right away. Lawrence was suggested. **Mary Conrad** agreed to be Speakers Committee Chair.

Trails Head will plan to present our ideas to the OCTA Mid-year Board meeting here in March and get final approval of our hosting and the location.

### **DR. JAMES G. (JIM) LEE, JR. PASSES AWAY.**

**Dr. James G. (Jim) Lee, Jr.** passed away on **December 30** at the age of 91. **Jim** was a longtime member of Trails Head Chapter and was a past president, vice president and treasurer.

## **2010**

### **TRAILS HEAD CHAPTER MEETING**

On **Saturday, February 13 at 10:00 a.m.** members held the first chapter meeting of the year at the Midwest Genealogy Center on Highway 291 in Independence.



**Pictured above at Midwest are (l-r) Eva Allen, Bill Bundschu, Diane Hinshaw, Shirley and Ross Marshall, Michele McGeeney, Kelly Breen, Mary Conrad and Jim Budde**

It was a very delightful experience. **Beth Foulk**, the guide, started the 45-minute tour at **10:00**. Attendees covered both floors of this new and spacious research center, occupying 52,000 sq. ft.

Obviously, since it was opened less than two years ago, it is a state-of-the-art high-tech 21<sup>st</sup> century facility with WiFi. They have 60,000 books and add about 100 per week.

The upper floor contains a huge map collection, including USGS Quads. Copies are available for as little as ten cents. Also upstairs is a 6000 sq. ft. room for future expansion.

A short business meeting followed. In the absence of **President Pat Traffas** and **Vice President Dick Nelson, Ross Marshall** presided.

**Ross** gave an overview of the planning for the OCTA 2012 Convention that the chapter is planning to host after approval at the OCTA March Board meeting.

Trails Head will have a convention committee that will welcome all interested parties and will meet monthly. The first order of business will be for the committee to settle on a site for the convention. OCTA Association Manager **Travis Boley** has received several bids from hotels.

**Ross** and **Jim Budde** reminded everyone that anyone of the chapter is free to attend the OCTA Mid-Year Board meeting that will be held on **March 5-6** at the National Frontier Trails Museum.

**Mary Conrad** reviewed the next chapter meeting to be held at the historic Grinter House on **Saturday, April 10 at 10:00 a.m.**

**Ross** also invited everyone to attend the Rendezvous #3 at Lone Elm Park on National Trails Day, **June 5**. Trails Head hosts this meeting every other year.

### **OCTA MID-YEAR BOARD MEETING**

As is the custom, OCTA has its Mid-Year Board meeting in Independence. This year it was on **March 5-6**. One of their key actions was to approve Trails Head Chapter as the host for the OCTA 2012 Convention.

As usual, Trails Head sponsored a luncheon for all who attended. Among the local chapter members who participated and attended were **Dick Nelson, Jim Budde, Ross Marshall, John Mark Lambertson, Bob Burkhart**.

### **NATIONAL FRONTIER TRAILS MUSEUM 20<sup>th</sup> ANNIVERSARY**

During a very wintry and snowy week 20 years ago, the National Frontier Trails Center (now Museum) was dedicated and opened in Independence, the first along the trails.

On **Friday evening March 23, 1990** a special 'pre-dedication' reception was held at the NFTC that included local political, civic and trail leaders as well as attendees from several states along the trail.

Before the reception, an exotic six-course meal (including rattlesnake!) was enjoyed by all at the Remington Restaurant at the Adams Mark Hotel.

When the attendees came out of the hotel, upwards of a foot of snow had fallen and drifted. The rented limousines were pulled out of the parking lot with snowplows! But we all made it to the Center.

The next day was the official ribbon-cutting and opening. Also the OCTA National Headquarters was dedicated next door. To the next Wednesday, special trail events were held. .

### **CHAPTER MEETING**

The spring chapter meeting was at **10:00 a.m.** at Grinter Place on **Saturday, April 10 2010**.

**Joe Brentano**, Site Administrator for the Grinter Historic Site, gave a tour of the 1857 Grinter House, owned by the Kansas Historical Society.

The house had been closed for a couple of years for restorations. A 2005 KDOT grant was used to refurbish the exterior brick and mortar, replace the roof and gutters, re-plaster the interior walls, refurbish interior and exterior wood trim, repaint, and reinterpret the rooms.

The kitchen and dining area now are hands-on rooms for children and adult activities. The first floor room on the east, originally the parlor, is displayed as an 1857 parlor. The Grinters used the upstairs rooms as bedrooms. The east upstairs room is exhibited as Annie Grinter's bedroom

while the west upstairs room, once the children’s bedroom, is displayed as a Victorian parlor, as Annie might have had downstairs later in the nineteenth century.

Moses and Annie Grinter had ten children of which five lived to adulthood. By the time the Grinters built this house, their third house, only two children were still at home. While many say “two children” in this context, such is confusing. If the house was built in 1857 as many think, one teen daughter would not marry until April, 1858, a six-year-old daughter died in October, 1857, and another daughter was born in July, 1857. Then two children were born in the early 1860s, and one of those lived for two years while the other lived to adulthood. When people count “two children” for the third Grinter house, they are counting only the one daughter born in July, 1857 and the son born in the 1860s, who lived to adulthood.

Even though no primary documentation has been found, Moses almost certainly ran the ferry across the Kansas River for the Army. Either the Army or Moses had to have had an agreement with the Delawares to maintain a ferry on Delaware property. The Grinter Ferry also incorporated civilians. Moses also had charters to run a gristmill, a sawmill, and a trading post on Delaware lands. In addition, they had a large farm with livestock, crops and an orchard.

When the federal government moved the Delawares from Kansas to Oklahoma, about 60 chose to remain in Kansas, including Annie who was half Delaware,

Along with the tour of the house which included family history, **Brentano** spoke of future plans. Planning for the creation of a replica of a ferry similar to the one at Marysville, Kansas already is underway, but those plans stalled when a partner withdrew from the project.

**Brentano** hopes to place this replica plus a garden and small orchard on the south lawn. (By 2020, an historic garden is on the south yard, but an orchard and replica ferryboat had not yet been installed.)

After these additions are established, KHS plans to recreate the stone wall and picket fence around the house that kept the livestock away from the house. Finally, KHS would like to recreate a log cabin since the Grinters first lived in such a house and would like to recreate a Delaware longhouse to help tell the story of the Delawares in the East. (By 2020, money still has not been available to recreate a stone wall, picket fence, log cabin, and Delaware longhouse.)

After the tour, attendees gathered for a short planning meeting concerning both the 2012 Convention and the upcoming Rendezvous #3.

## FIRST TOWN OF KANSAS MARKER



Marker with text on both sides.



Looking south from 2<sup>nd</sup> and Main parking lot.

The Native Sons and Daughters of Greater Kansas City on the morning of **June 3**, 160 years since the incorporation of Kansas, MO, dedicated the first interpretive marker at the Town of Kansas (the name Kansas City came later) site near 2<sup>nd</sup> and Main downtown.

For several years NSDGKC and KCAHTA have focused on the site, which has had no interpretive markers of any kind. That is most unfortunate because that site is where Kansas City began and where four national historic trails traverse.

At least nine more interpretive exhibits will be installed this year through a partnership between Trails Head Chapter, the Kansas City Planning and Development Department, the Port Authority, the National Park Service, KCAHTA, SFTA Missouri River Outfitters Chapter and Lewis and Clark's River Bend Chapter.

Over the last eighteen months, **Craig Crease** and **Ross Marshall** have been attending meetings of the above partners to plan the exhibits as well as other site improvements.

When completed, this site will truly be a destination point for visitors. With the pedestrian bridge out to the edge of the Missouri River, this pleasing visual resource has been available for several years. Very soon a person will be able to go to the site and also read about the history of Westport Landing, the beginnings of the town of Kansas, MO, which later became the City of Kansas and still later Kansas City.

What a thrill to finally get this project moving after ten years of meetings and discussions!

### **RENDEZVOUS #3 - 2010**

Thanks to a quality group of speakers, a nice **June 5** day and great attendance, Rendezvous 2010 was a rousing success. Thanks to all who had a part in producing Trails Head Chapter's third biennial Rendezvous on National Trails Day.

Thanks especially to **President Pat Traffas**, for her work in planning the event and acting as master of ceremonies. And to **Vice President Dick Nelson** for greeting people, handling registration, nametags, lunch tickets, etc. And thanks to all the organizations and speakers who brought display exhibits, especially the Kansas City Area Historic Trails Association.



**Pictured above is Gary Werner, Executive Director of the Partnership for the National Trails System, who gave the keynote address.**



**Tim Talbott, Administrator of Mahaffie Farmstead.**

Over 40 of us met at the Rendezvous Shelter at the historic Lone Elm Park at 167<sup>th</sup> and Lone Elm Road south of Olathe, as in previous years.



The day began at **10:30 a.m.** with a guided tour of Lone Elm Park, led by Olathe Parks and Recreation Director **Kevin Corbett**.

When the group returned at **11:00**, **Pat** welcomed everyone and began by asking each person to introduce themselves.

She then convened the meeting under the theme of *Partnering – The Way to do Trails Work*.

First to speak was **Gary Werner**, Executive Director of the Partnership for the National Trails System, officing in Madison, WI, which is an umbrella group of all support groups for each of the 30 trails in the National Trails System.

He talked about the concept of partnering on a national basis, with an emphasis on how public-private partnering works. The vision of Benton MacKaye, founder of the Appalachian Trail, was that a partnership between private citizenry groups and federal agencies would work the best for his trail. This became the core vision of the 1968 National Trails System Act.

In addition, he discussed the Decade Goals and action plans, developed under the Partnership's leadership and adopted by the National Trails groups. They are the strategies for the decade ending in 2018, the 50<sup>th</sup> anniversary of the National Trails System Act.

Before lunch, **Pat** introduced **Tim Talbott**, site Administrator of the Mahaffie Farmstead, who had a team of oxen named Buck and Tip - pictured above. He described and demonstrated how a team works together. **Tim** and the team have been with us before and they are always a delight. How the team has grown since 2008!

A great lunch was then served by Two Men and a Grill.

As we convened after lunch, **Dan Sturdevant**, president of the local River Bend Chapter of the Lewis and Clark Trail Heritage Foundation, was introduced. He distributed the words and led us in singing his delightful new composition called *Roll on Mighty River*, a multi-verse song that mentions every historical thing you have ever heard about the Kansas City area! Great music and great fun!



**Steve Rhoades landscape architect with Patti-Banks, Inc.**



**Lou Austin, president of 3-Trails Inc.**

Steve Rhoades, who has been with us before, brought us up to date on the progress on the 1000-mile-long MetroGreen hiking-biking trail in the five-county area. It crosses all the branches of the historic trails in our area and offers an excellent opportunity for interpretive wayside exhibits at these intersections. Trails Head and many other partners need to be pursuing this strategy.

The next speaker was **Lou Austin**, president of 3-Trails Inc. pictured above, who brought us up to date on his work in south Kansas City. He has focused especially on the Independence

Route of the Santa Fe-Oregon-California Trail between the 85<sup>th</sup> and Manchester Street ruts and 123<sup>rd</sup> and State Line at New Santa Fe. His work has been a model of public-private partnering (or as he calls it, 'strategic alliances') as well as partnering on the MetroGreen trail, which runs along this historic route. Many interpretive exhibits, pieces of art, park land, pedestrian bridges over roadways, and other preservation work has been done - and more to come. Good work **Lou!**

Next to speak was **Brad Wolf**, Administrator of the KCMO Landmarks Commission, who reviewed progress downtown on the Town of Kansas project at the Missouri River near the foot of Main Street. Ten new interpretive wayside exhibits will soon be installed to add to the Native Sons and Daughters of Greater Kansas City interpretive marker dedicated on **June 3** at the site. Many partners on both the public and private side have worked on these markers in addition to site improvements, which will make this site a tourist destination.

**Jack Kline**, Parks Services Supervisor of the Overland Park Parks Services Department, then reviewed the work on Sapling Grove Park finished last year in partnership with the National Park Service, Trails Head Chapter, MRO Chapter and KCAHTA. Overland Park is working with the same partners on interpretive wayside panels at Strang Park to be finished this year.



**Gary Hicks**



**Pat Traffas**

**Gary Hicks**, above, The Native Sons and Daughters of Greater Kansas City President, then reviewed the NSDKC partnering activity on marking projects in a total of ten counties in the Kansas City area. These projects include the Town of Kansas project and the ongoing work at Fort Osage.

Next up was **Alexis Woodall**, Special Events Coordinator for Mahaffie Farmstead, who has had a leadership role with a giant partnering project called Freedom's Frontier National Heritage Area. Designated by the U.S. Congress and administered by the National Park Service, this project covers 12 counties in Missouri and 29 in Kansas. Its three themes are 'Shaping the Frontier', 'MO-KS Border War' and 'Struggle for Freedom'.

Freedom's Frontier includes countless historic sites as well as hundreds of miles of National Historic Trails. **Alexis** has attended lots of meetings of the FFNHA as the coalition had developed and completed a comprehensive management plan for the Heritage Area. There will be much more to come in future years as this plan unfolds.

**President Pat Traffas** (above) thanked each of the speakers and before adjourning, asked for others in the audience to briefly mention partnering projects they have been doing.

**Roger Slusher**, MRO Chapter President, has been working on the Highway 24 Byway project from Fort Osage to Boonville. The chapter continues its limestone post marking of the Santa Fe Trail.

**Dan Sturdevant** mentioned the Lewis and Clark chapter Sacagawea plaque project working with Fort Osage.

**Shirley Coupal**, Regent of the Kansas Society of the Daughters of the American Revolution, recounted the KSDAR project with the National Park Service to renovate and rededicate all 97 Santa Fe Trail DAR markers in Kansas. **Shirley** and **Pat** have led that project and will continue as they rededicate many of the markers.

Attendees adjourned at 2:30 and most went to the rededication of the Lone Elm DAR Santa Fe Trail stone marker which is located out at the corner of 167<sup>th</sup> and Lone Elm Road. It was first dedicated November 6, 1906 with hundreds of people in attendance.

### **2010 ELKO OCTA CONVENTION**

Under the theme of *Emigrants, Elko and the Elephant*, another exciting OCTA Convention was hosted by the California-Nevada Chapter in Elko, NV **August 9-14**. The story of the California National Historic Trail during its 40+ years was told, toured and witnessed during the week. Nearly 400 attendees were registered.

The various routes from Idaho and Utah that fed into the Wells-Elko area, the various routes down the Humboldt River, and the wagon trains and people that traversed them were the focus of the program.



**Awards chair Dick Nelson presenting awards**



**Ross Marshall and Kathy Conway at the OCTA sales table in the bookroom**

One of the key elements of all OCTA Conventions is the presentation of annual awards during the Awards Banquet, which this year was conducted by **Trails Head Vice-President Dick Nelson** (pictured above), who currently serves as the Awards Committee Chair.

**Dick** did an excellent job in the presentation of upwards of twenty awards.

One of the highlights of this convention was the chance to visit the new California National Historic Trail Interpretive Center just a few miles west of Elko on I-80. It had just opened and some of the inside exhibits were not yet completed. But it proved to be a spectacular location for the annual Saturday night barbeque.

The Center overlooks the Humboldt valley, the trail along the river, and the entrance of the Hastings Route from the south as it emerged from the west side of the Ruby Mountains. A magnificent and historic view!

The interpretation exhibits are not only inside, but outside as well, with at least a couple dozen interpretive markers and displays in the courtyard. Additionally, there is a flowing model of the Humboldt with the trails, rivers and other geologic features along it.

If you are ever in that area, don't miss seeing the new Interpretive Center!

The bus tours were very interesting. One of the most intriguing sites was the site that the 1846 Donner-Reed Party found themselves in, south of Wells, after having come over Silver Zone Pass into Nevada. They should have gone north over Secret Pass to the Humboldt River, but instead went south all the way around the Ruby Mountains and finally came to the Humboldt River near the Center as described above. If they had made the right choice, they would have saved several days and likely we would hardly know about the Donner-Reed Party today!

The speakers were outstanding as they discussed some of the above subjects as well as Joseph Walker, the 1841 Bidwell-Bartleson Party, the 1844 Stephens-Townsend-Murphy Party, the 1849 Gold Rush, etc.

But one of the best deliveries was done by Kansas City area **John Mark Lambertson**, the Director at the National Frontier Trails Center in Independence, whose talk was entitled *Ceaseless Agony of an Unspeakable Anxiety*. It was the story of a lady whose husband left her to go on the Gold Rush. She wrote letter after letter trying to find him. The story had a happy ending because she found him. Great presentation!

### **TRAILS HEAD MEMBERS RECEIVE AWARDS**

Several Trails Head Chapter members have received awards from local organizations recently for their work on National Historic Trails in the Kansas City area.

By Kansas City Area Historic Trails Association:

**Pat Traffas** – David Lavenburg Award for Volunteerism

**Craig Crease** – Distinguished Achievement Award

By Missouri River Outfitters SFTA Chapter:

**Shirley Coupal** – Award of Appreciation

**Pat Traffas** – Award of Appreciation

Each of the above highly regarded awards were given for long-time achievements. Congratulations to each of you!

### **NATIONAL REGISTRY FOR TRAIL SITES**

An initiative by the National Park Service to prepare nominations for trail sites to be on the National Register of Historic Places is underway.

Santa Fe National Historic Trail sites in both Missouri and Kansas are being reviewed for consideration. Obviously, trail sites in the Kansas City area are sites on the Oregon and California trails, as well as the Santa Fe Trail.

**Rick Anderson**, National Register Historian for the Kansas Historical Society, who is also a Trails Head Chapter member, has been touring Kansas trail sites this fall. Anderson requested **Mary Conrad** to provide him with copies of source material about many Kansas trail sites.



Pictured above (l-r) is **Craig Crease, Rick Anderson** and **Ross Marshall** at the Gardner Junction site just southwest of Gardner, KS. That will be one of the sites seriously considered for nomination.

Anderson, Crease and Marshall visited this site as well as Sapling Grove Park at 85<sup>th</sup> and Grant and Flat Rock Creek Park at 103<sup>rd</sup> and Pflumm on October 5. In addition, **Rick** had already visited the Lone Elm Park.

A rather long list of sites had been selected in Missouri along the Santa Fe Trail and is also being worked on.

## **2012 OCTA CONVENTION PLANNING**

As was reported in the April issue of *Tidings*, the OCTA Board of Directors accepted the proposal of Trails Head Chapter to host the 2012 OCTA Convention. Since then, a volunteer steering committee has been meeting every month or so to begin the planning process. Although much work remains, the following accomplishments can be reported:

After months of visiting hotels, negotiating rates and contract terms, and discussions, Trails Head leaders have selected a host hotel and have, thanks to **Travis Boley**, OCTA's Association Manager, finalized a contract. It is with the Holiday Inn in Lawrence on Iowa Street just south of the west I-70 exit. It is a newly remodeled Holidome in a great location with plenty of meeting space for OCTA, great rates (\$72 per night), cooperative staff, and very favorable contract terms.

Trails Head has developed a theme, which is: **Westward Go! Trails, Tribes, Territories**

This is a theme which will enable us to focus not only on the Oregon-California Trail, but also on stories of the 1830 Permanent Indian Frontier and the Kansas Territory through which the trails passed.

We will meet again toward the end of October and will begin to form the various committees and task assignments, plus create a timeline for all the decisions that need to be made.

Those that have participated in the planning thus far are **Ross Marshall, Pat Traffas, Dick Nelson, Mary Conrad, Jim Budde, Craig Crease, Travis Boley, Arnold Cole, Eva Allen, Kendall McNabney, and Kelly Breen.**

Several key leaders are already in place, among which are:

Convention Chair	<b>-Ross Marshall</b>
Speakers	<b>-Mary Conrad</b>
Tours	<b>-Craig Crease</b>

Convention Booklet –**Craig Crease**  
 Webpage, digital tech -**Jim Conway, Bob Burkhart**  
 Hotel arrangements -**Pat Traffas, Eva Allen, Travis Boley**  
 Regis. & Hospitality –**Eva Allen, Rob Cook**  
 BBQ –**Dick Nelson, Eva Allen, Bob Burkhart**

All members are welcome at the meetings. Watch your email for meeting time and place!

### ANNUAL CHAPTER MEETING HELD

Trails Head Chapter held its annual membership and awards meeting on **Saturday morning, November 13, 2010** at the Kansas City Central Library at 14 W. 10<sup>th</sup> Street downtown.



Vice President Dick Nelson greets our crowd.



Ross Marshall, Anita Faddis and Don Carlton.

16 people were present; **Dick and Ruby Nelson, Craig Crease, Dorothy Kroh, Kendall McNabney, Dan Sturdevant, Rob Cook, Pete Cuppage, Gary Hicks, Rick and Laura Anderson, Ross and Shirley Marshall, guests Anita Faddis, Don Carlton and Steve Rhoades.**

After an exceptionally delightful tour of the library from **10:15 to 11:15 a.m.** led by staffer **Sherrie Kline Smith**, we went to our meeting room for refreshments and business meeting.

**Vice President Dick Nelson** opened the meeting (above) with a brief review of the 2010 activities that included sponsoring the very successful Rendezvous #3 event in June.

The **Nominating Committee**, consisting of **Chair Craig Crease** and members **Arnold Cole** and **Eva Allen**, brought the nominations. The following slate was approved by vote:

**President – Pat Traffas** (re-election)  
**Vice President – Dick Nelson** (re-election)  
**Secretary – Mary Conrad** (re-election)  
**Treasurer Arnold Cole** (new)

In the absence of **Treasurer Jim Budde**, **Dick** distributed copies of **Jim's** written year-end (fiscal year - October 1, 2009 to September 30, 2010) financial report of income and expenses. The year-end bank balance was \$4139.23. Trails Head has a total of 76 members.

The 2012 Convention Committee report was presented by **Chair Ross Marshall**. Several meetings have been held. The Holiday Inn in Lawrence had been selected as the host hotel and the contract has been finalized and signed by **Travis Boley**, OCTA's Association Manager. The theme of **Westward Go! Tribes, Territories and Trails** has been selected by the committee. Several committee chairs have been chosen, many people have already volunteered for key assignments, but many more volunteers will be needed as time progresses.

The notes from each meeting will be distributed to all our members by email. And all chapter members are invited to the planning meetings, which will be held every month or so.

**Dick**, as Awards Committee Chair, (other members were **Mary Conrad** and **Ross Marshall**) opened the annual awards program ceremonies.

The first was the Award of Appreciation which was presented to the Shawnee Indian Mission State Historic Site. Above is **Anita Faddis**, Site Administrator, and **Don Carlton**, the vice-president of the Friends of the SIMSHS, who accepted the award, which read: *“In recognition of the continuing historic trails educational and interpretation programs at the Site, and specifically for the completion of a room of exhibits devoted to historic trails in our area.”*



**Steve Rhoades and Ross Marshall**



**Dick Nelson and Kendall McNabney**

The second was the Distinguished Partner Award which was presented to **Steve Rhoades**, Landscape Architect and Principal with Patti Banks, Inc. (above left with **Ross Marshall**) *“In recognition of his leadership for many years with Patti Banks Associates and MARC as a landscape architect and promoter of the MetroGreen recreational trail system, and specifically for partnering on interpretation and preservation efforts with historic trails groups in the Kansas City area.”*

**Dick** then presented the Meritorious Achievement Award posthumously to **Elaine McNabney**. Her husband **Kendall McNabney** (above right, with **Dick**) accepted the award.

#### **EXECUTIVE COMMITTEE MEETING**

On **Monday December 6 at 5:00 p.m.** an Executive Committee meeting was held. Present were **Eva Allen, Rick Anderson, Bob Boland, Travis Boley, Kelly Breen, Bob Burkhart, Mary Conrad, Rob Cook, Shirley Coupal, Jean Coupal-Smith, Pete Cuppage, Ross Marshall, Dick Nelson** and **Pat Traffas**.

**President Pat Traffas** presided. 2011 planning was the main agenda. Ideas for chapter meetings, **May 7** bus tour, convention 2012 planning, and November annual meeting, the June rendezvous at Lone Elm Park, etc. were discussed.